

Agreement No. CE 58/2017 (DS)
**Energizing Kowloon East - Revitalization of Tsui
Ping River - Design and Construction**

Public Engagement Report

June 2019



ATKINS

Member of the SNC-Lavalin Group

TABLE OF CONTENTS

1	INTRODUCTION.....	1
1.1	Project Background	1
1.2	Site Location.....	1
1.3	Scope of the Assignment	1
1.4	Objectives and Structure of Report	2
2	DETAILS OF PUBLIC ENGAGEMENT (PE) CHANNELS AND ACTIVITIES	3
2.1	Introduction.....	3
2.2	Channels for Enquiry, Comments and Opinion Collection	3
2.3	Project Website.....	4
2.4	Pamphlets.....	4
2.5	Project Virtual Reality (VR) Simulation	5
2.6	Other Publicity Elements (Poster)	5
2.7	Roving Exhibitions	5
2.8	Consultation with Kwun Tong District Council	6
2.9	Consultation with Harbourfront Commission	6
2.10	Community Workshops.....	7
2.11	Focus Group Meeting	7
3	SUMMARY OF MAJOR VIEWS AND RESPONSE.....	7
3.1	Source of Views.....	7
3.2	General Summary of Views	7
3.3	Major Comments	8
3.4	Responses to Major Comments.....	10
4	WAY FORWARD	14

Appendices

Appendix A	Questionnaire
Appendix B	Project Website
Appendix C	Pamphlets
Appendix D	Photos of Virtual Reality Sets and its Use
Appendix E	Poster
Appendix F	Roving Exhibition Panels
Appendix G	Roving Exhibition Photos
Appendix H	Kwun Tong District Council - Discussion Paper for District Facilities Management Committee Meeting on 17 May 2018 (Chinese Only)
Appendix I	Kwun Tong District Council – Presentation Material for District Facilities Management Committee Meeting on 17 May 2018 (Chinese Only)
Appendix J	Kwun Tong District Council District Facilities Management Committee – Minutes of Meeting on 17 May 2018 (Chinese Only)
Appendix K	Harbourfront Commission Task Force for Kai Tak Harbourfront Development - Discussion Paper for Meeting on 23 May 2018
Appendix L	Harbourfront Commission Task Force for Kai Tak Harbourfront Development - Presentation Materials for Meeting on 23 May 2018
Appendix M	Harbourfront Commission Task Force on Kai Tak Harbourfront Development – Minutes of Meeting on 23 May 2018
Appendix N	Presentation Materials for Community Workshops on 16 June 2018 and 7 July 2018
Appendix O	Photos of Community Workshops on 16 June 2018 and 7 July 2018
Appendix P	Presentation Materials for Focus Group Meeting on 22 June 2018
Appendix Q	Photos of Focus Group Meeting on 22 June 2018
Appendix R	Summary of Questionnaire Survey

Figures

Figure 1.1 Project Layout Plan

1 INTRODUCTION

1.1 Project Background

- 1.1.1 The existing King Yip Street Nullah in Kwun Tong was built over 50 years ago. With a length of approximately one kilometre, it runs along Tsui Ping Road and King Yip Street from Kai Lim Road to the harbour. It abuts the Kwun Tong Business Area and a residential area, having a prime geographical location. Given its riverine characteristics, the nullah possesses excellent conditions to become a precious public space in the urban area. To complement the Energizing Kowloon East Initiative in transforming Kowloon East into another Core Business District, this Project propose to revitalize the King Yip Street Nullah into a green and vibrant Tsui Ping River with environmental, ecological and landscaping upgrading, while enhancing the flood conveyance capability of the nullah at the same time,
- 1.1.2 The project accords with the initiative of revitalizing suitable existing nullahs promulgated in the 2017 Policy Agenda, aiming at enhancing their ecological value, providing a greener environment, promoting water friendliness, and improving the environment for building a liveable city.

1.2 Site Location

- 1.2.1 The existing nullah runs along Tsui Ping Road and King Yip Street from Kai Lim Road to the harbour. It is divided into Zones A to D from the upstream towards the downstream (as shown on **Figure 1**) in this Project. The study area of the Project includes the existing King Yip Street nullah and its surrounding area, as well as nearby streets and roads, such as Wai Yip Street, Hung To Road, Hing Yip Street and Shing Yip Street.

1.3 Scope of the Assignment

- 1.3.1 The major scope of the project is to transform of the existing King Yip Street nullah into Tsui Ping River with environmental, ecological and landscape upgrading with associated enhancement of drainage capacity.
- 1.3.2 To manifest the water body of the revitalised river, the water level of the river is to be regulated with tidal levels. This is achieved through a water gate in the downstream river near Hung To road. Waterfall landscape will be created when stored water is released over the water gate to the downstream. The project will also provide various “close water” facilities, such as engineering wetland, landscape decks and floating

pontoons.

- 1.3.3 The project will follow the vision of "Walkable" Kowloon East to enhance the connectivity between the river and the surrounding areas (including Tsui Ping River Garden). It is proposed to construct riverside walkways, cross river walkways and decks and associated sitting area and viewing platforms, to create river-centered a public open space. Tsui Ping River will become an urban blue-green corridor connecting multiple leisure and creativity facilities in Kwun Tung District.

1.4 Objectives and Structure of Report

- 1.4.1 The purpose of this report is to summarize the public engagement activities undertaken, highlight key issues identified or comments collected during the engagement process and the corresponding responses and way forward.
- 1.4.2 The structure of the Report is divided into the following sections:
- Section 1 introduces the project background and objective of the report;
 - Section 2 outlines the details of Public Engagement channels and activities;
 - Section 3 summarizes the major comments received during the Public Engagement and responses by the project team; and
 - Section 4 gives a conclusion of the views collected from the Public Engagement and proposes the way forward.

2 DETAILS OF PUBLIC ENGAGEMENT (PE) CHANNELS AND ACTIVITIES

2.1 Introduction

2.1.1 The Stage 2 Public Engagement (Stage 2 PE) Exercise was launched from 17 May 2018 to 17 July 2018, and the following PE activities were arranged:

- Consultation with Kwun Tong District Council (KTDC) District Facilities Management Committee (DFMC);
- Consultation with the Task Force on Kai Tak Harbourfront Development (TFKT) under Harbourfront Commission;
- Roving Exhibitions;
- Community Workshops;
- Focus Group Meeting;
- Distribution of project pamphlets and posters;
- Provision of Virtual Reality (VR) simulation;
- Setting up of a project website including introduction of updated design scheme and publicity of PE activities; and
- Questionnaires were made available for the public during the Community Workshops, the Focus Group Meeting and roving exhibitions.

2.2 Channels for Enquiry, Comments and Opinion Collection

2.2.1 Questionnaires (as shown in **Appendix A**) were made available for the public during the Community Workshops, the Focus Group Meeting and roving exhibitions.

2.2.2 The public and stakeholders were also invited to submit their enquiries or provide their comments and opinions via the following channels:

- (i) Email: EnquiryTsuiPing@atkinsglobal.com
- (ii) Hotline: (852) 9335 7746
- (iii) Fax: (852) 2890 6343

(iv) Mail: Drainage Services Department, Drainage Projects Division 44/F,
Revenue Tower, 5 Gloucester Road, Wan Chai, Hong Kong

(v) Project website: <http://www.tsuipingriver.hk/>

2.2.3 During the Stage 2 PE, 2248 questionnaires and 5 written comments were received via the above channels. Major comments on the Revitalisation of Tsui Ping River are summarized and responded to in **Section 3** of the Report.

2.3 Project Website

2.3.1 An updated project website (<http://www.tsuipingriver.hk/>) was launched on 17 May 2018 and updated regularly to provide information on the updated design scheme and public engagement activities.

2.3.2 The front page of the project website is shown in **Appendix B**.

2.4 Pamphlets

2.4.1 Pamphlets were published in May 2018 to introduce the refined design scheme as well as promote the PE activities. Apart from uploading onto the project website, the pamphlets were distributed to the following parties:

- Residents and stakeholders within the vicinity of the Tsui Ping and Kwun Tong area through the Hong Kong Post Circular Service (about 37,000 copies);
- Principals of primary schools, secondary schools, special schools and school organisations through invitation to the Community Workshops;
- Various community organisations within Kwun Tong District through invitation to the Community Workshops;
- Various concern groups through invitation to the Community Workshops;
- Kwun Tong District Council Members through invitation to the Community Workshops;
- Members of Kwun Tong South Area Committee and Kwun Tong Central Area Committee through invitation to the Community Workshops;
- Kwun Tong District Office;

- Professional institutions through invitation to the Focus Group Meeting;
- Green groups through invitation to the Focus Group Meeting;
- Academia through invitation to the Focus Group Meeting; and
- General public within the Kwun Tong District through distribution of pamphlets/posters in Shui Wo Street Library, Lam Tin Public Library and roving exhibitions..

A sample of the pamphlet is shown in **Appendix C**.

2.5 Project Virtual Reality (VR) Simulation

- 2.5.1 A project VR simulation for the Revitalized Tsui Ping River was produced to give the stakeholders and the public a better understanding and an immersive experience of the project from first person perspective. The VR simulation was made available during the roving exhibitions at MTR Kwun Tong Station Exhibition Site, Laguna Plaza, Domain Mall and Kai Tin Shopping Mall, as well as the two community workshops at Sai Tso Wan Neighbourhood Community Centre and Kwun Tong Community Centre. Photos of the use of VR at the PE events are shown in **Appendix D**.

2.6 Other Publicity Elements (Poster)

- 2.6.1 To effectively lobby the public's support and interest for the project, a poster was designed to inform the launching of the PE Exercise. The locations and times of the Community Workshops and channels of expressing views were shown in the posters, which were distributed to the invitees of the Community Workshops and the Focus Group Meeting.
- 2.6.2 A copy of the poster can be found in **Appendix E** of the report.

2.7 Roving Exhibitions

- 2.7.1 The roving exhibitions were organised to introduce to the public the objectives of the project and the updated design scheme as well as to promote the PE events. Besides, interactive roving exhibitions with VR demonstration of the design scheme were carried out at MTR Kwun Tong Station Exhibition Site, Laguna Plaza, Domain Mall, and Kai Tin Shopping Mall respectively.

2.7.2 Roving exhibitions were arranged at 10 locations within the Tsui Ping and Kwun Tong area as listed in the table below:

Time	Venue
17 May to 21 May 2018	Shing Yip Street Rest Garden
22 May to 1 June 2018	Kwun Tong Promenade*
2 June to 8 June 2018	Tsui Ping commercial Complex (Open space near Tsui On House)
9 June to 15 June 2018	MTR Kwun Tong Station Exhibition Site*
9 June to 15 June 2018	Laguna Plaza*
17 June to 22 June 2018	Laguna Park
18 June to 29 June 2018	Exhibition Hall, Energizing Kowloon East Office
23 June to 29 June 2018	Domain Mall*
30 June to 6 July 2018	MTR Kwun Tong Station Exhibition Site*
30 June to 6 July 2018	Kwun Tong Recreation Ground (Open Space near Tsui Ping Road)
9 July to 12 July 2018	Kai Tin Shopping Mall*
*with interactive VR demonstration	

2.7.3 The exhibition panels are shown in **Appendix F**.

2.7.4 Photos taken at the roving exhibition locations are shown in **Appendix G**.

2.8 Consultation with Kwun Tong District Council

2.8.1 The project team attended the meeting of District Facilities Management Committee (DFMC) under the Kwun Tong District Council (KTDC) on 17 May 2018. The updated design scheme was presented to the members of the DFMC and their views were solicited. The discussion paper, presentation materials and meeting minutes are attached in **Appendices H, I and J** respectively.

2.9 Consultation with Harbourfront Commission

2.9.1 The project team attended the meeting of the Task Force for Kai Tak Harbourfront

Development of the Harbourfront Commission on 23 May 2018. The updated design scheme was presented to the members of the Task Force and their views were solicited. The discussion paper, presentation materials and meeting minutes are attached in **Appendices K, L and M** respectively.

2.10 Community Workshops

2.10.1 Two Community Workshops were organised at Sai Tso Wan Neighbourhood Community Centre on 16 June 2018 and at the Kwun Tong Community Centre on 7 July 2018. The updated design scheme was presented to the participants and the general public were invited to share their views and concerns on the project.

2.10.2 38 no. and 24 no. of people attended the 16 June 2018 workshop at Sai Tso Wan Neighbourhood Community Centre and 24 people attended the 7 July 2018 community workshop at Kwun Tong Community Centre respectively. Participants were assigned into four different groups in each community workshop. A facilitator was assigned to each group to guide the discussion. The facilitators were also supported by representatives from DSD and engineering specialists from the design consultant to provide technical responses to queries. The workshop was concluded by a presentation by representatives from individual groups on their respective concerns, views and suggestions. The presentation material for the Community Workshop and photos are attached in **Appendices N and O respectively**.

2.11 Focus Group Meeting

2.11.1 A Focus Group Meeting was held at the Energizing Kowloon East Office on 22 June 2018 with professional bodies, the academia, professional institutes and green groups to introduce the proposed design of the revitalization and to collect comments and views. 13 representatives from professional institutes, academics and green groups attended the Focus Group Meeting and shared their views through questions and answers sessions. Photos are attached in **Appendices P and Q** respectively.

3 SUMMARY OF MAJOR VIEWS AND RESPONSE

3.1 Source of Views

3.1.1 The views collected during the Stage 2 PE were mainly from the following channels:

- Questionnaires collected in the roving exhibitions, the Community Workshops and the Focus Groups Meeting (refer to **Appendix R** for summary);
- Opinions presented in the Community Workshops;
- Opinions presented in Focus Group Meeting; and
- Written comments received via fax, project website and project email.

3.1.2 Most of the respondents to questionnaires (around 80%) were residents in Kwun Tong or working/going to school in Kwun Tong.

3.2 General Summary of Views

3.2.1 We received generally positive feedback on the project from the public. About 93% of the respondents to questionnaires agreed that the Project would enhance the community environment in Kwun Tong District.

3.2.2 The most concerned items for the existing King Yip Street Nullah were flood conveyance capability, water quality and visual issues. They also expected to be provided with more public leisure space. The respondents/participants were interested in using the proposed facilities, especially the landscaped decks, the floating pontoon and riverside/cross-river walkways.

3.2.3 The comments received could be categorised into three fields: (i) Revitalizing the River, (ii) Walkability and Connectivity, and (iii) Fostering Public Space. It was agreed in general that the proposed works in the updated design scheme could meet the design objectives in these three fields, to achieve goals of benefit the society and contribute to revitalizing Kowloon East, as well as facilitate blue-green network through infrastructural projects.

3.2.4 A broad consensus was reached on that the proposed works in the project would benefit the community, with some comments to further refine the scheme. The major comments and corresponding response are summarised in the following sections.

3.3 Major Comments

3.3.1 Revitalizing the River and reducing flood risk

- 3.3.1.1 Some participants raised concern on drainage capacity of Tsui Ping River, climate change, hygiene, odour, water quality and safety during revitalization works.
- 3.3.1.2 Public raised concerns on water quality and odour issues and suggested to take appropriate actions to stop the illegal discharge of polluted water, to improve water quality of Tsui Ping.
- 3.3.1.3 Some participants suggested to consider the climate change effect that may cause more severe rainstorm events, apart from considering the previous rainfall records. In addition, it was also suggested to develop a flood warning system for Tsui Ping River to safeguard the public when using the water-friendly facilities.
- 3.3.1.4 The public and the professionals had similar concerns on the following issues regarding the engineered wetland:
- The efficiency of the proposed engineered wetland might be limited as it was of a small scale and disconnected from Tsui Ping River; and
 - It was suggested to include an easy-to-understand information panels next to the wetland, and the content could be related to the wetland or the ecology along Tsui Ping River; and
- 3.3.1.5 Some participants considered that the build and wildlife would concentrate in region at downstream of the river and suggested to relocate the wetland to the downstream of the river for better demonstration on the ecological improvement. There was a suggestion that DSD could arrange open days of Kwun Tong Preliminary Treatment Works for the purpose of public education.
- 3.3.1.6 Some participants have concerns on the water gate:
- the hydraulic impact due to the present of water gate to during rainstorm event; and
 - the impact of the water gate on the ecological system such as bird and wildlife..
- 3.3.1.7 Some participants have concern on the maintenance of instream planting and suggested planting local plant species such as *Kandelia obovate* etc. and providing gabion wall

and crushed rock in the river river to slow down the flow and to enhance the growing environment for the instream plantings.

3.3.2 Walkability and Connectivity

3.3.2.1 Some participants agreed the connectivity between Tsui Ping River and the nearby region should be further enhanced. It was suggested to provide walkway to suit the needs of different users (such as wheelchair users, parents with strollers, bicyclists etc.).

3.3.2.2 Some public suggested that the design of streetscape in each of the zones should be blend in with the existing landscape.

3.3.2.3 Some public raised concerns on the possible traffic impacts due to the new pedestrian crossing at Wai Fat Road. It was suggested to consider other forms of pedestrian crossing with due consideration of the traffic flow and demand in future development.

3.3.2.4 Some participants raised that the existing footpath at Tsui Ping Road was narrow and and suggested to widen the footpath of Tsui Ping Road.

3.3.2.5 Some participants suggested to provide cycling routes to connect Kwun Tong Promenade and the future Cha Kwo Ling Harbourfront.

3.3.2.6 Some participants indicated that the proposed cantilevered pedestrian walkway should not compromise the hydraulic performance of the Tsui Ping River.

3.3.3 Design of Public Space

3.3.3.1 Some participants suggested adding different kinds of interesting and attractive design element in the project.

3.3.3.2 Some participants reminded that the facilities should be properly maintained to attract visitors over a long period of time.

3.3.3.3 It was suggested to allow flexibility in managing the public space and to provide various facilities such as seating facilities, drinking fountains and transparent balustrades, to create more vibrant and enjoyable public space. However, some of the participants also have concerns on the potential nuisance to the nearby residents, due to misuse of open space by street performers.

3.3.3.4 Some professionals reminded that effective inter-departmental collaboration between the design teams of Tsui Ping River and Tsui Ping River Garden should be maintained to facilitate compatible design.

- 3.3.3.5 Some participants suggested that the proposed amenity area below Kwun Tong Bypass could be a skate park or a mobile library.
- 3.3.3.6 Water-friendly designs permitting public's contact with the water body were preferred.
- 3.3.3.7 Some participants suggested that greening should be considered in new pedestrian walkways.
- 3.3.3.8 Some professionals have concern on the greening design in the open space underneath Kwun Tong bypass.
- 3.3.3.9 Some participants suggested to plant different flowering plants which bloom in different seasons. This would allow visitors to appreciate the revitalized Tsui Ping River and create a special ambience around the river.

3.4 Responses to Major Comments

3.4.1 Revitalizing the River

- 3.4.1.1 We would consider various measures in planning and design, to minimize our impacts to the drainage capacity, environment and public safety.
- 3.4.1.2 We would keep liaising with EPD to identify and rectify expedient connections so as to improve the water quality and odour issues in the river. Dry weather flow interceptors (DWFIs) will also be built to intercept and divert the polluted dry weather flow into the sewerage system to reduce polluted discharge into the Tsui Ping River and DSD would also conduct regular cleansing to Tsui Ping River to improve the water quality.
- 3.4.1.3 Climate change effects had been taken into account in assessing the hydraulic performance of Tsui Ping River according to the latest design requirements in DSD's Stormwater Drainage Manual. We would also implement a warning system to notify public to stay away from the water-friendly facilities when heavy rainfall was predicted.
- 3.4.1.4 Information panels would be set up adjacent to the engineered wetland to provide information such as the function of wetlands, plant species and ecological features of the revitalized river etc., for public education purpose. The proposed wetland would be a new water-friendly facility with additional greening for landscape and ecological improvement as well as education purposes. Public could enjoy wetland plants closely and understood more about the works of DSD.

- 3.4.1.5 It was explained that there was no suitable space for an engineered wetland in the downstream tidal section with rapid water flow during rainstorms. Nevertheless, we would plant suitable aquatic plants in different river sections to enhance the ecological habitats without compromising the drainage capacity of the river.
- 3.4.1.6 DSD would consider organizing guided tours at suitable location to showcase and promote the revitalized river.
- 3.4.1.7 The operation of the smart water gate would be controlled by system with linkage to weather forecast information from the Hong Kong Observatory. The smart water gate would adjust itself with tides to regulate the water level under different weather conditions. If heavy rainstorm was predicted, the smart water gate would be lowered to restore the hydraulic capacity of the nullah for discharge of storm flows. This ensures the smart water gate would not create adverse hydraulic impact to the stormwater drainage system.
- 3.4.1.8 The smart water gate could also adjust itself with tides to store the water in the storage area upstream during high tide and the water would plunge down from the water storage area slowly during low tide everyday. This would maintain the water connectivity and minimize the impacts to the ecology. We would continuously discuss with relevant maintenance parties to ensure proper operation and maintenance of the facilities.
- 3.4.1.9 A planting trial was in progress to aid the selection of plant species and planting systems that would be suitable for the river.

3.4.2 Walkability and Connectivity

- 3.4.2.1 All accesses in the project had been designed to comply with barrier-free access requirements.
- 3.4.2.2 To make the Tsui Ping River a vitalized riverside public open space merging with the surrounding communities, the design team had adopted a compatible design concept by weaving together the surrounding leisure facilities, so as to build an integrated public leisure space centered on the river.
- 3.4.2.3 It was considered that providing an at-grade signalized pedestrian crossing across Wai Fat Road was a preferred option taking into account the site constraints, the cost effectiveness and the traffic impact.
- 3.4.2.4 We had conducted a comprehensive traffic impact assessment for the proposed works which included the proposed at-grade signalized pedestrian crossing across Wai Fat

Road. The traffic impact induced from the new VTC campus had been included in the assessment. The assessment results showed that our proposed works would have minor traffic impact to the study area.

3.4.2.5 We proposed to construct an additional cross-river walkway near Fuk Ning Road to divert part of the pedestrian flow heading Kwun Tong Swimming Pool and crossing Lei Yue Mun Road, to the footpath next to the Kwun Tong Recreational Ground. We expected that more pedestrian would choose to use the footpath next to the Kwun Tong Recreational Ground after the completion of the staircase and elevator of the Lei Yue Mun Road Footbridge being constructed as well as the ramp to be re-provided under this project. This will mitigate the busy pedestrian flow at the footpath along Tsui Ping Road. In addition, we will replace the existing parapet flood wall along the footpath with glass balustrade to widen the overall footpath and construct a cantilevered walkway that locally widen the footpath near the bus stop at Tsui Ping Road, to further mitigate the busy pedestrian flow at the footpath along Tsui Ping Road.

3.4.2.6 We had made reference to the concept of “GreenWay” being adopted in CEDD’s pilot project at the Kwun Tong Promenade in our walkway design at the astuary of the river. Sufficient width of the walkway at the astuary of the river would be reserved for shared use by pedestrians and cyclists.

3.4.2.7 The effect of provision of new pedestrian walkways had been accounted for in our hydraulic assessment. These walkways would not have adverse impact on the flood conveyance capability of the river.

3.4.3 Public Space Design

3.4.3.1 We would continue to review the design with the view to include more interesting elements in the design if possible.

3.4.3.2 We understood the importance of maintenance and management, we were liaising actively with relevant departments for the maintenance and management arrangement.

3.4.3.3 We would maintain an open mind in the maintenance and management arrangement of the public open space, including provision of amenity facilities (i.e. benches and drinking fountain) to create vibrant public space for public enjoyment.

3.4.3.4 We were liaising actively with relevant departments in adopting a compatible design with the surrounding leisure facilities (such as Tsui Ping River Garden), so as to build an integrated public open space centered on the river.

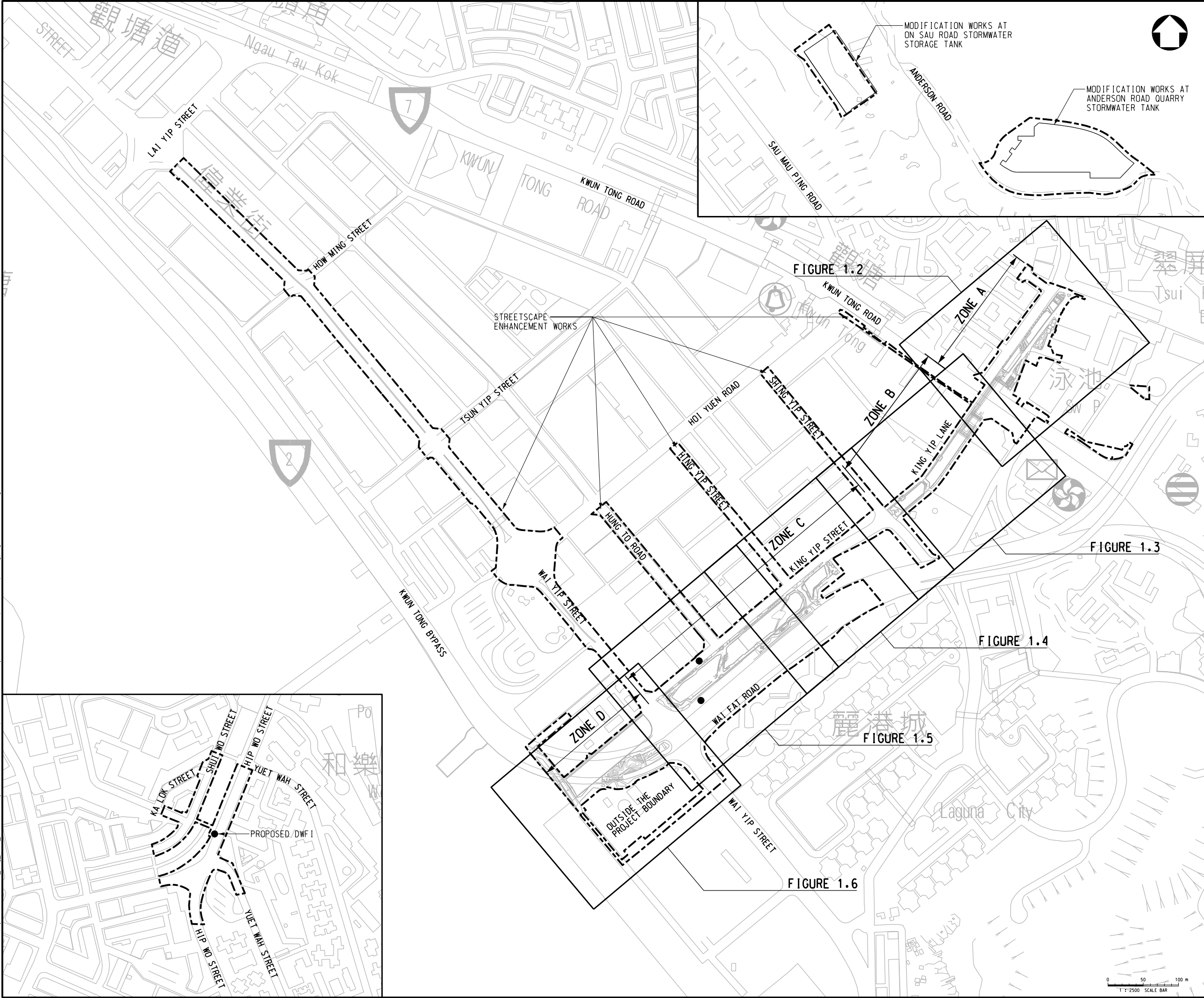
- 3.4.3.5 The current vacant unallocated government land underneath Kwun Tong Bypass would be developed as a public open space under this project. Apart from providing landscape and benches, we would also provide pet-friendly facilities such as pet toilet in this area to meet public needs.
- 3.4.3.6 Since Tsui Ping River would continue to serve the function as a major drainage channel in the downstream of the East Kowloon catchment, the water level in the river could increase rapidly in a short time during heavy rainstorms. To safeguard public safety, there was no plan at the time being to allow the public to have direct contact with the water body after the revitalization works. Nevertheless, we would build a number of water-friendly facilities such as cross-river walkways, landscaped decks and a floating pontoon for the public to enjoy the river landscape up close in order to promote a water-friendly culture. For the greening design of the project, we would liaise with relevant departments in selecting suitable plant species with due consideration on the planting location, adjacent design and compatibility etc..
- 3.4.3.7 Regarding the greening proposal, the project team would consider different factors, such as planting environment, compatibility with surrounding facilities and space constraints etc. and discuss with relevant departments.

4 WAY FORWARD

- 4.1.1 Through the Stage 2 PE exercise, general consensus supporting the project was received. The public and stakeholders generally agreed that the project would enhance the community environment in the Kwun Tong District.
- 4.1.2 In the meantime, public expressed comments and expectations on the project through questionnaires, email, phone call and participation in the community workshops etc.. The project team will collate and organize the comments gathered during the public engagement period, and enhance the detailed design of the project.
- 4.1.3 Further local stakeholder engagement activities will be explored throughout the future stages of the project to maintain dialogue with local public, to address concerns on temporary arrangements during the construction stage.

Figures

User name: WONG4872 Date:13-Jun-19 Time:5:52:20 PM
Filename: P:\CN\HK\Project\5160911-Tsui_Pkg_River_D&C\20.00 Project Deliverables\20.10 Report\35_ Constructability Assessment Report\2_Draft (working)\Figure\Figure 1.1.dgn



NOTES:

1. ALL DIMENSIONS ARE IN MILLIMETRES UNLESS OTHERWISE SPECIFIED.

2. ALL LEVELS ARE IN METRES ABOVE HONG KONG PRINCIPAL DATUM UNLESS OTHERWISE SPECIFIED.

LEGEND:

PROJECT BOUNDARY

●

PROPOSED DWF 1

A2	05/19	MINOR REVISION		RSAN	JEC XY
A1	05/19	DRAFT TENDER		RSAN	JEC XY
Rev.	Date	Description		By	Ck'd App'd
Drawing Status				Suitability	
DESIGN				-	

ATKINS

Member of the SNC-Lavalin Group

SCENIC

spawton architecture

Client

渠務署

Drainage Services Department

排水工程部

Drainage Projects Division

Project Title

CE58/2017(DS)
ENERGIZING KOWLOON EAST -
REVITALIZING OF TSUI PING RIVER -
DESIGN AND CONSTRUCTION

Drawing Title

LOCATION PLAN

Scale	Designed	Drawn	Checked	Authorised
1 : 2500	RSAN	IT	JEC	XY
Original Size	Date	Date	Date	Date
A1	APR 2019	APR 2019	APR 2019	APR 2019

Drawing Number

FIGURE 1.1

Revision

A2

0 50 100 m
1" = 2500 SCALE BAR

Copyright © Atkins Limited

Appendix A

Questionnaire

Questionnaire for Stage 2 Public Engagement Activities of “Revitalisation of Tsui Ping River”

Part 1 : Opinion

1. Are you living in Kwun Tong or working / going to school in Kwun Tong?
☐ Yes ☐ No

2. What is/are your concern(s) with regards to the existing King Yip Street Nullah?
(May select more than one item)
☐ Visual ☐ Drainage Capacity ☐ Water Quality
☐ Walkability and Connectivity ☐ Amenity Area Provision
☐ Others (Please Specify) : _____

3. Do you agree that the “Revitalisation of Tsui Ping River” project will enhance the community environment in Kwun Tong District?
☐ Agree ☐ Disagree ☐ No comment

4. What do you envisage “Revitalisation of Tsui Ping River” project may enhance amongst the following items? (May select more than one item)
☐ Visual ☐ Drainage Capacity ☐ Water Quality
☐ Walkability and Connectivity ☐ Amenity Area Provision
☐ Others (Please Specify) : _____

5. Which facilities would you like to use of “Tsui Ping River”?
(May select more than one item)
☐ Floating Pontoon ☐ Engineered Wetland ☐ Landscape Deck
☐ Walkway Along / Across River ☐ Others (Please Specify) : _____

6. Other Inquiries / Opinion :

Questionnaire for Stage 2 Public Engagement Activities of “Revitalisation of Tsui Ping River”

Part 2 : Personal Particulars (Optional)

Name : _____

Gender : ☐ Male ☐ Female

Age : ☐ 19 or below ☐ 20 to 39 ☐ 40 to 59 ☐ 60 or above

Thank you very much for your valuable opinion

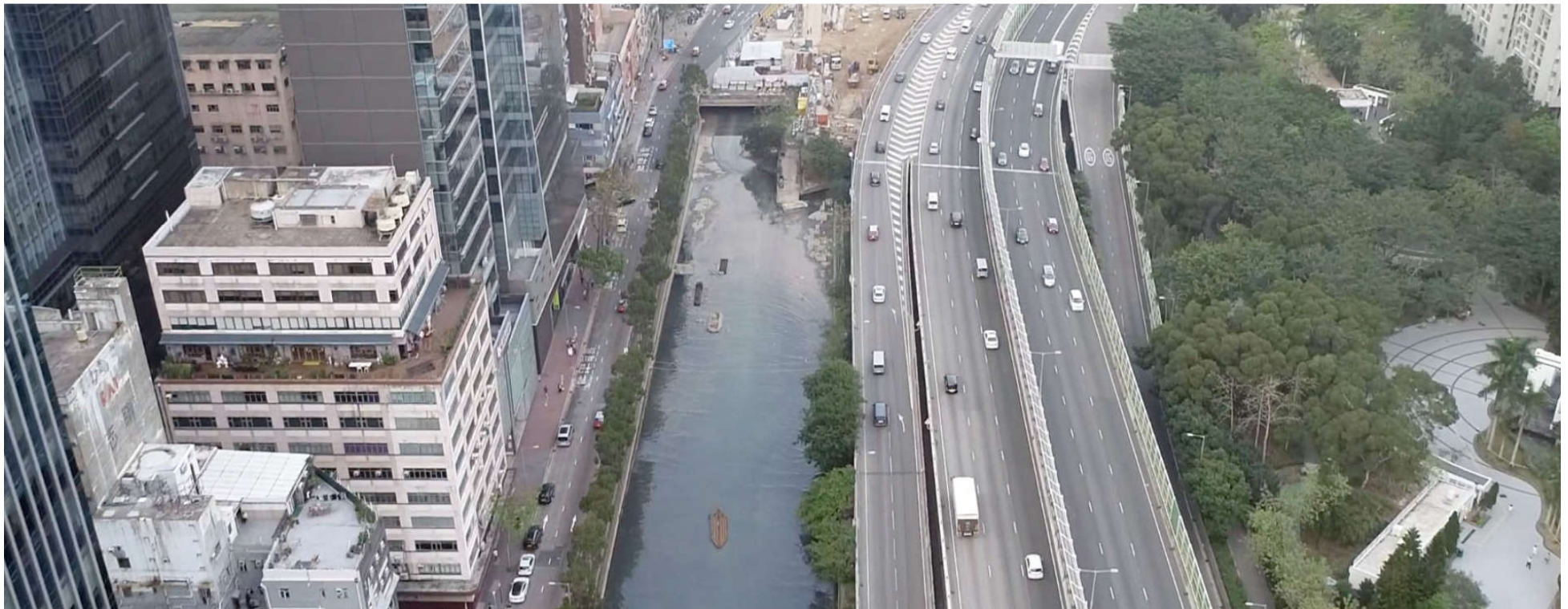
Drainage Services Department

Appendix B

Project Website

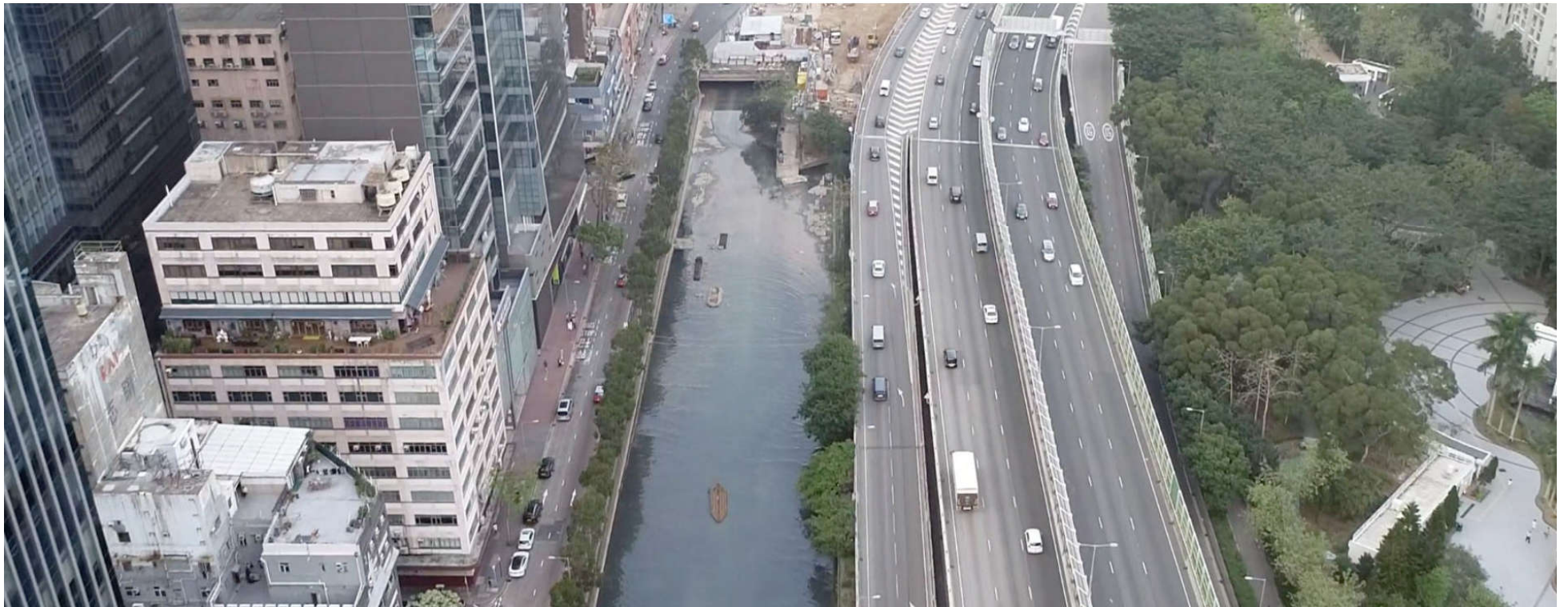
Project Website (English)

Revitalisation of Tsui Ping River



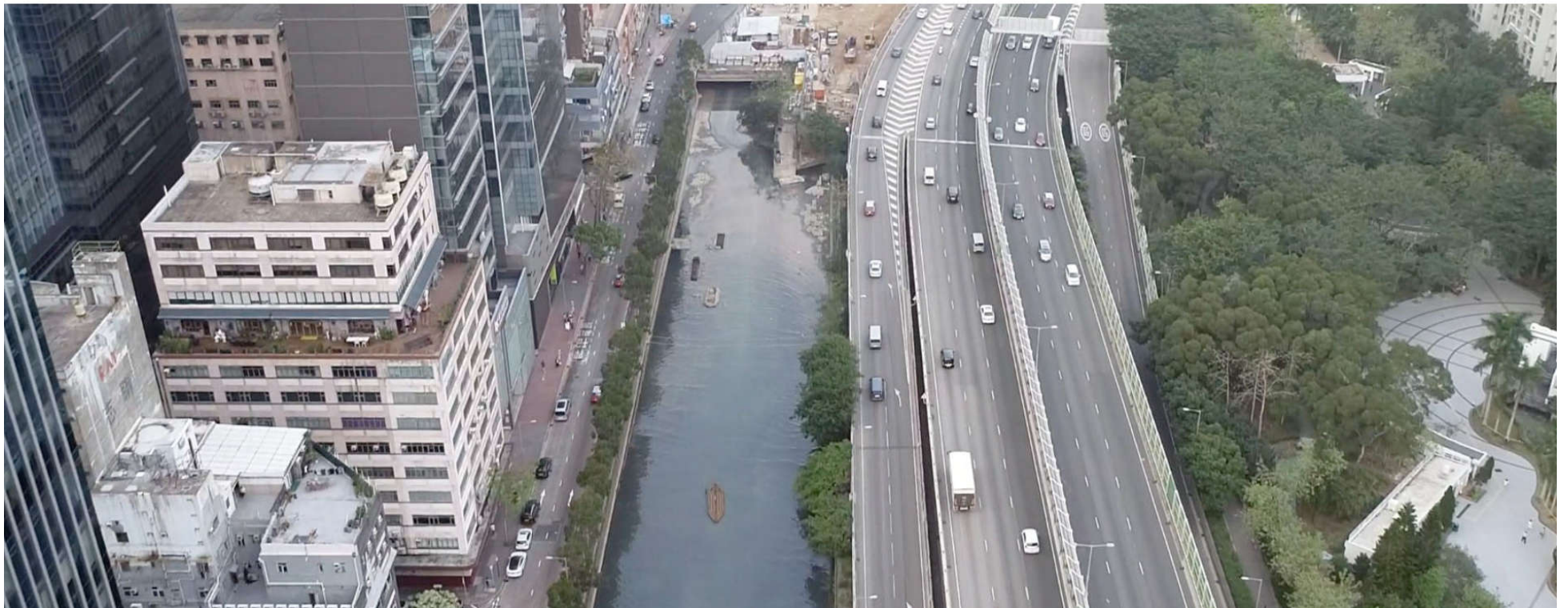
Project Website (Traditional Chinese)

活化翠屏河



Project Website (Simplified Chinese)

活化翠屏河



Appendix C

Pamphlets

有關河道活化
Views on
Revitalising the River

建議設置預報系統，保障人工浮島上遊人的安全
Suggestion to set up flood warning and surveillance system to safeguard visitors on the floating pontoon

關注區內水質問題
Concerns about the water quality

我們 會進行詳細的排水影響評估，確保防洪水平符合現行標準。另外亦會考慮設置天氣監測系統，以提醒市民相關資訊。我們一直與環境保護署緊密合作，從上游查找排放源頭，以提升河道水質。

Detailed drainage impact assessment will be conducted to ensure compliance with the required flood protection standards. We will also consider setting up a weather monitoring system for alerting the public. In addition, the DSD has been working collaboratively with the Environmental Protection Department to identify expedient connections at the upstream with a view to improving the water quality of the river.

於第一階段公眾參與中，公眾對項目反應正面，其中的主要意見和回應包括：

The public gave positive feedback on the Project in Stage 1 PE. The major views and responses include:

重審建議拆卸的鯉魚門行人天橋斜道
Re-provision of ramp for Lei Yue Mun Road
Footbridge

於偉發道增設行人過路設施，
加強蘇港公園與翠屏河的連繫
Provision of crossing facilities at Wai Fat Road
to enhance connectivity between Laguna Park
and Tsui Ping River

於翠屏河河口位置加設行人天橋，
連接東西兩岸
Provision of footbridge at the estuary
of Tsui Ping River to enhance connectivity
between the east and west banks

為進一步完善翠屏河周邊的行人通
道網絡，我們已將上述建議納入
項目的設計方案中。

To further enhance the connectivity with the surrounding areas, we have included the above proposals in our design.

期望項目能加入近水設施，
推動近水活動
Provision of water-friendly facilities to
promote water-friendliness

可加入藝術元素，
營造一個充滿活力的公共空間
Introducing artistic elements to foster
a vibrant public space

為活化後翠屏河提供導賞團、
資訊介紹、教學活動等配套
provision of guided tours, information gallery
and educational activities for the
revitalised Tsui Ping River

我們
會繼續與各持份者探討
有關公共空間設計及
使用建議。

We will continue to explore the design and use of public space with various stakeholders.

美化現有通道
連繫海濱長廊

Beautification of the
Existing Walkways

To enhance connectivity
with the promenade

 **新增行人**
連繫東西

Pedestrian
To enhance
with the s

The King Yip Tseung nullah is located in the centre of Kwun Tong District adjacent to the residential and commercial areas. It is inherent riverine characteristics makes it a precious riverside public space in the urban areas. We aspire that the Project will inject vibrancy and turn Tsui Ping River into a new landmark where the public can enjoy the river scenes and carry out leisure activities.

The King Yip Street nullah is located in the centre of Kwun Tong District adjacent to the residential and commercial areas. Its inherent riverine characteristics makes it a precious riverside public space in the urban areas. We aspire that the Project will inject vibrancy and turn Tsui Ping River into a new landmark where the public can enjoy the river scenes and carry out leisure activities.

新增行人通道
加強河道兩岸連繫，
同時營造河畔休憩空間

Pedestrian Walkway
enhance connectivity with the
surrounding areas and to provide
riverside public space

Water Gate
To manifest the water body characteristics and to create a water storage area through regulating the water level

園境平台
提供河畔公共空間

Landscape Deck
To provide riverside public space

人工浮島
提供近水體驗

Floating Pontoon
To promote
water-friendliness

你好，我是小麗。我會為你介紹翠屏河項目的最新進展和資訊。

新增行人過路處
加強翠屏河與
麗港公園的連繫

Pedestrian Road Crossing
To enhance connectivity with
Laguna Park

新增行人通道
加強河道兩岸連繫

Pedestrian Walkway
To enhance connectivity
with the surrounding areas

To provide public space and enhance the walkability of Shing Yip Street

Landscape Deck
To provide riverside public space and enhance the walkability of Kwun Tong Road



除現有天橋基座
善河邊排水能力
removal of existing
footbridge ramp
To enhance the
drainage capability



鯉魚門道
天橋斜道
Ramp
Mun Road
Footbridge

新增行人通道
優化翠屏道行人通道環境

Pedestrian Walkway
To enhance the walkability
of Tsui Ping Road

Aquatic Plants
To enhance the aquatic habitats

人工濕地
提供近水觀景設施，
亦可作公共教育用途

Engineered Wetland
To provide water-friendly
and educational facilities

起動九龍東
 辦事處展覽廳
 Exhibition Hall,
 Energizing Kowloon
 18/6/2018 - 1

大本型
Domain Mail
23/6/2018 - 2

成業街休憩花園
Shing Yip Street
Rest Garden
17/5/2018 - 24/5/18

18 麗港公園
Laguna Park
17/6/2018 - 22/6/2018

觀塘海濱花園
Kwun Tong
Promenade
22/5/2018 - 1/6/2018

龍港城商場
 Laguna Plaza
 9/6/2018 - 15/8/2018

對出空地 (近翠城)
Tsui Ping Commercial
Complex (Open Space
near Tsui On House)
2/6/2018 - 8/6/2018

觀塘站展覽位
IR Kwun Tong Station
Exhibition Site
9/6/2018 - 15/6/2018

A horizontal timeline with a blue and purple gradient bar. It marks three key dates and locations for the 2018 Hong Kong International Horticultural Exhibition:

- 29/6/2018 - 20/8/2018**: 大本堂 (Domain Mall)
- 30/6/2018 - 6/7/2018**: 香港國際園藝館 (近出口D室內展位) MTR Kwun Tong Station Exhibition Site near Exit D
- 30/6/2018 - 6/7/2018**: 香港國際園藝館對空地 (近單車路) Kwun Tong Recreation Ground (Open space near Tsui Ping Road)

An illustration of a hand holding a green TPE card is shown at the end of the timeline.

Appendix D
Photos of Virtual Reality Sets and Use in the
Roving Exhibition





Appendix E

Poster

活化翠屏河

REVITALISATION
OF
TSUI PING
RIVER

第二階段 公眾參與
STAGE 2 PUBLIC ENGAGEMENT

活化
Revitalise

連繫
Connect

共享
Share



社區工作坊
COMMUNITY
WORKSHOP

我們期望為翠屏河注入生氣和活力，加強河道與周邊地區的連接，將它化為一個可以讓市民欣賞到河景和進行休閒活動的新地標。

We aspire that the Project will inject vibrancy and turn Tsui Ping River into a new landmark where the public can enjoy the river scenes and carry out leisure activities.



你的意見 — YOUR VIEWS

我們希望繼續聆聽你就本項目提出的意見，進一步完善設計方案。

公眾人士可於2018年7月16日或之前透過以下途徑就「活化翠屏河」項目發表意見。

We would like to have your valuable views on the Project to enhance our design.

Members of the public can give your views on the Revitalisation of Tsui Ping River project through the following channels on or before 16 July 2018.



渠務署排水工程部

香港灣仔告士打道5號稅務大樓44樓
(請註明 活化翠屏河 — 第二階段公眾參與)

**Drainage Services Department
Drainage Projects Division**

44/F, Revenue Tower, 5 Gloucester Road, Wanchai, Hong Kong
(Please specify "Revitalisation of Tsui Ping River – Stage 2 Public Engagement")



EnquiryTsuiPing@atkinsglobal.com



2890-6343



請瀏覽本項目網頁參閱詳細資料
Please visit our project website for details

www.tsuipingriver.hk

1

2018年6月16日 (星期六)
16 June 2018 (Saturday)

茜草灣鄰里社區中心
(觀塘茶果嶺道81號)
Sai Tso Wan Neighbourhood
Community Centre
(81 Cha Kwo Ling Road,
Kwun Tong)

下午 3:00 pm – 5:00 pm



2

2018年7月7日 (星期六)
7 July 2018 (Saturday)

觀塘社區中心
(觀塘翠屏道17號)
Kwun Tong Community Centre
(17 Tsui Ping Road, Kwun Tong)

下午 3:00 pm – 5:00 pm



如欲參加社區工作坊，請透過網上報名表格或電話9335 7746*登記。詳情請瀏覽本項目網頁。

To participate in the Community Workshops, please register through the online registration system on our website or the registration hotline 9335 7746*. For details, please visit the project website.

* 電話登記服務時間為星期一至星期五上午9時至下午6時，公眾假期除外。

* The registration hotline operates from 9:00am to 6:00pm every Monday to Friday, except public holidays

Appendix F

Roving Exhibition Panels

455mm



第二階段 公眾參與
STAGE 2 PUBLIC ENGAGEMENT

活化 翠屏河

REVITALISATION
OF
TSUI PING
RIVER

活化
Revitalise

連繫
Connect

共享
Share



發展局
Development Bureau
起點行動 Kowloon East Office
九龍東辦事處

ATKINS
Member of the SNC-Lavalin Group

1920mm

Left Panel

第二階段 公眾參與 
STAGE 2 PUBLIC ENGAGEMENT

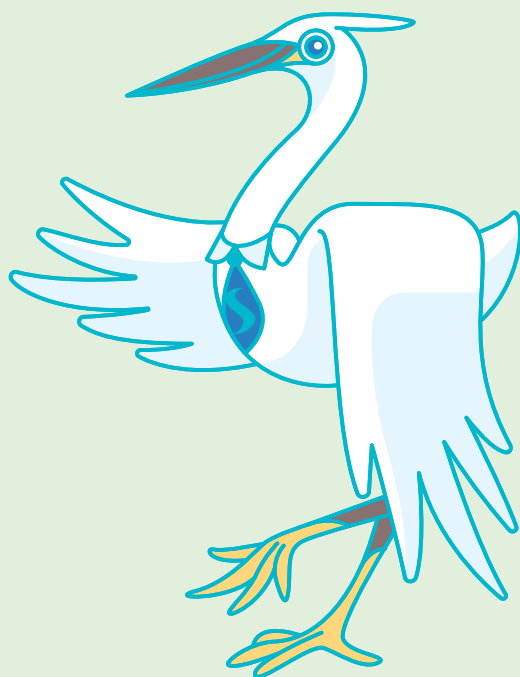
活化 翠屏河

REVITALISATION
OF
TSUI PING
RIVER

活化
Revitalise

連繫
Connect

共享
Share



發展局
Development Bureau
 Kowloon East Office
九龍東辦事處

ATKINS
Member of the SNC-Lavalin Group

Appendix G

Roving Exhibition Photos





Appendix H
Kwun Tong District Council - Discussion Paper
for District Facilities Management Committee
Meeting on 17 May 2018 (Chinese Only)

活化翠屏河 第二階段公眾參與

目的

本文件旨在向委員介紹「活化翠屏河」項目的最新設計方案，並就該項目徵詢委員的意見和尋求委員會的支持。

背景

2. 政府近年銳意把九龍東打造成為一個「綠色核心商業區」，發展局於「起動九龍東概念總綱計劃」中提出把觀塘敬業街明渠活化成「翠屏河」的概念。渠務署計劃利用環境、生態和園境美化等改善工程，將現有敬業街明渠活化成翠屏河。為配合活化翠屏河的主題，項目亦會一併加強毗鄰行人通道的連繫。

3. 本項目的公眾參與分為兩個階段。第一階段公眾參與已於2017年1月至3月進行。我們亦曾於2017年1月12日向委員會介紹本項目的初步設計概念，聽取委員的意見。我們隨後依據第一階段公眾參與中收集到的意見，進一步優化項目的設計內容。

項目概要

4. 敬業街明渠位於觀塘區的中央位置(請參考附件一)，加上河道的水景特質，具極佳條件成為市區中一個珍貴的河畔公共空間。我們期望為現有河道注入生氣和活力，加強河道與周邊地區的連接，為公眾帶來一個近水休憩設施。項目將包括以下工作重點：

(i) 活化河道

利用水景、園境和生態概念活化河道，改善河道水質，提升社區生活環境。

(ii) 改善行人環境 加強區內連繫

參照「易行城市」的可持續發展環保概念，改善河道兩旁的行人通道，並提供連接兩岸的行人天橋及觀景平台，藉以加強翠屏河與周邊地方的連繫。

(iii) 提供具活力的公共空間

改造敬業街明渠為一個感受河景和休閒活動的地標，配合興建中的翠屏河公園和周邊的休憩及康樂設施，為觀塘區增添活力和多元色彩。

(iv) 減低水浸風險

配合「東九龍雨水排放整體計劃檢討研究」中的建議，加強現有水道的排洪能力。

5. 本項目的最新設計方案請參考附件二。

項目時間表

6. 「活化翠屏河」的詳細設計工作已於2017年12月展開。我們將於2018年5月至7月舉行第二階段公眾參與活動，向公眾介紹最新的設計方案，及收集公眾對項目意見。

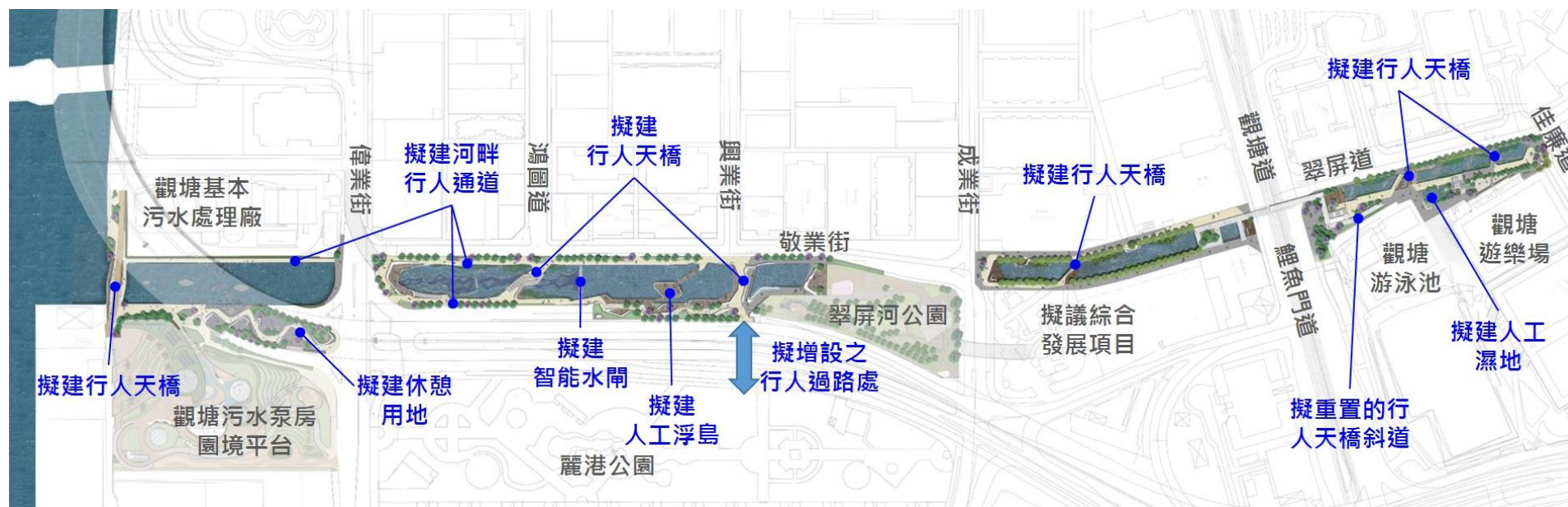
7. 我們預期在本年第三季就有關工程進行刊憲。

意見諮詢

8. 現就上述項目徵詢各委員意見，冀各委員能支持本項工程。

渠務署排水工程部
2018年5月

敬業街明渠位置圖



「活化翠屏河」平面圖



「活化翠屏河」設計模擬圖（佳廉道至鯉魚門道段）



「活化翠屏河」設計模擬圖（成業街至偉業街段）

Appendix I
Kwun Tong District Council – Presentation
Material for District Facilities Management
Committee Meeting
on 17 May 2018 (Chinese Only)

觀塘區議會
地區設施管理委員會



起動九龍東 - 活化翠屏河 第二階段公眾參與

(諮詢文件第20/2018號)
2018年5月17日

1

簡介內容



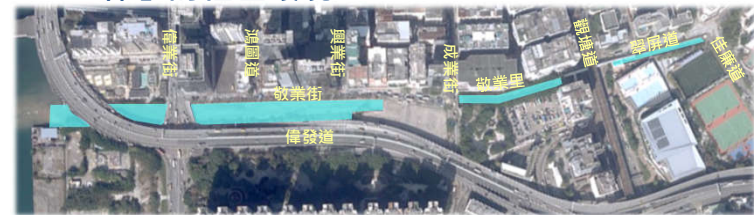
- ▶ 向委員介紹「活化翠屏河」的最新設計內容
- ▶ 介紹第二階段公眾參與
- ▶ 諮詢委員對項目的意見

項目背景

項目背景



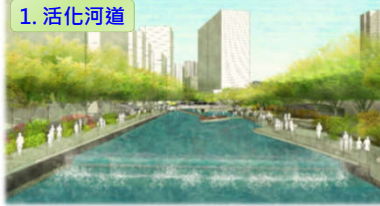
- ▶ 利用環境、生態和園境美化等改善工程，將現有明渠轉化為一條獨一無二的翠屏河
- ▶ 加強河道與周邊地區的連接，透過協同效應，讓市民享受一個「暢道通行、綠色環保」的社區環境。



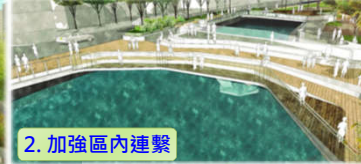
活化翠屏河 - 項目重點

活化 • 連繫 • 共享

1. 活化河道



2. 加強區內連繫



3. 營造具活力的公共空間



4. 減低水浸風險



項目進度及公眾參與

項目進度

活化 • 連繫 • 共享

- ▶ 第一階段公眾參與 - 2017年1月至3月
- ▶ 詳細設計工作 - 於2017年12月展開
- ▶ 第二階段公眾參與 - 2018年5月至7月

第一階段公眾參與的主要意見

活化 • 連繫 • 共享

- ▶ 河道活化
- ▶ 行人通道連繫
- ▶ 營造公共空間

第二階段公眾參與活動



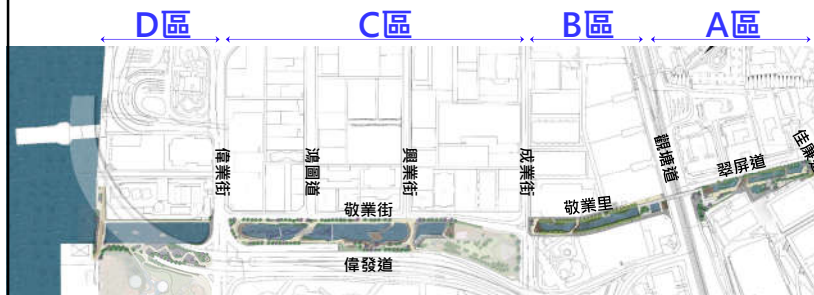
- ▶ 諮詢期 (5月17日至7月16日)
- ▶ 諮詢觀塘區議會地區設施管理委員會 (5月17日)
- ▶ 諮詢海濱事務委員會 (5月23日)
- ▶ 巡迴展覽 (5月17日至7月6日)
- ▶ 社區工作坊
 - 茜草灣鄰里社區中心 (6月16日)
 - 觀塘社區中心 (7月7日)
- ▶ 項目網頁：www.tsuipingriver.hk



最新設計方案



整體佈置圖



A區 - 佳廉道至觀塘道



A 區 - 佳廉道至觀塘道

活化 • 連繫 • 共享



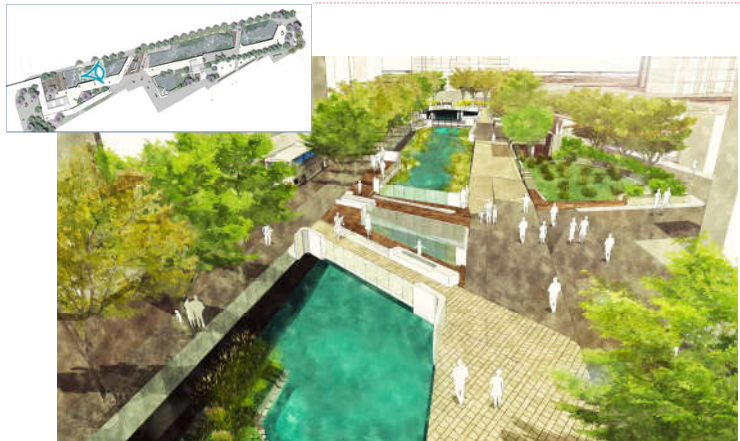
A 區 - 佳廉道至觀塘道

活化 • 連繫 • 共享



A 區 - 佳廉道至觀塘道

活化 • 連繫 • 共享



B 區 - 觀塘道至成業街

活化 • 連繫 • 共享



B 區 - 觀塘道至成業街

活化・連繫・共享



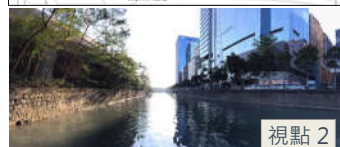
B 區 - 觀塘道至成業街

活化・連繫・共享



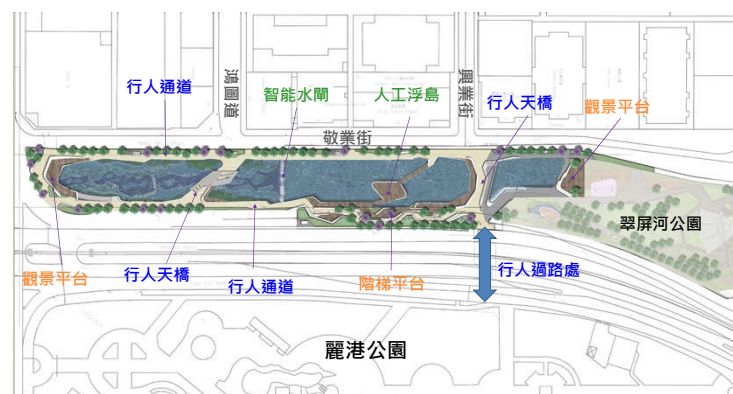
C 區 - 成業街至偉業街

活化・連繫・共享



C 區 - 成業街至偉業街

活化・連繫・共享



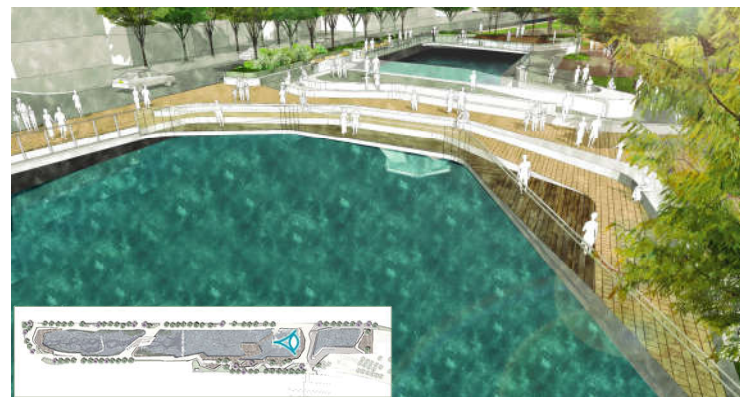
C 區 - 成業街至偉業街

活化 • 連繫 • 共享



C 區 - 成業街至偉業街

活化 • 連繫 • 共享



C 區 - 成業街至偉業街

活化 • 連繫 • 共享



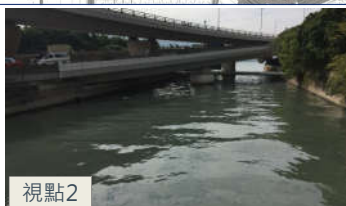
C 區 - 成業街至偉業街

活化 • 連繫 • 共享



D區 - 偉業街至維港

活化 • 連繫 • 共享

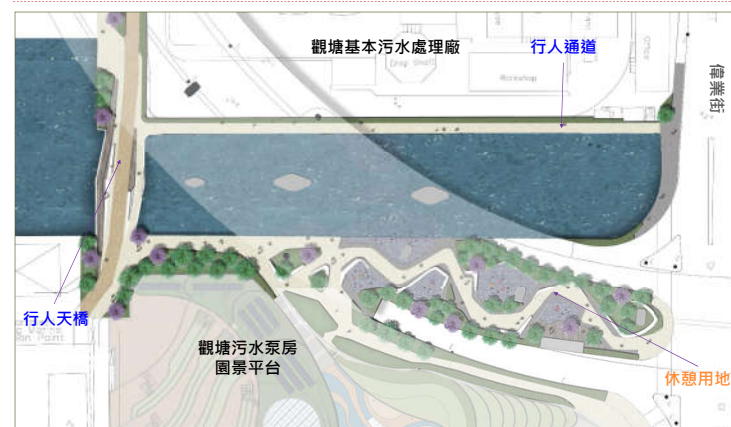


視點3

視點2

D區 - 偉業街至維港

活化 • 連繫 • 共享



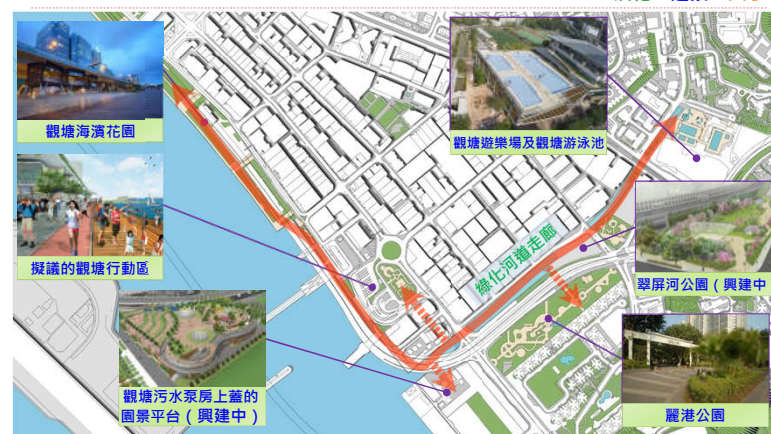
D區 - 偉業街至維港

活化 • 連繫 • 共享



綠化河道走廊

活化 • 連繫 • 共享





歡迎各委員就上述設計方案
提供意見，並就項目予以支持

謝謝

Appendix J
Kwun Tong District Council District Facilities
Management Committee –Minutes of Meeting on
17 May 2018 (Chinese Only)

**第五屆觀塘區議會屬下
地區設施管理委員會
第十六次會議記錄**

日期：2018 年 5 月 17 日（星期四）

時間：下午 2 時 30 分

**地點：九龍觀塘觀塘道 392 號創紀之城 6 期 20 樓 05-07 室
觀塘民政事務處會議室**

出席者：

主席

譚肇卓先生

副主席

鄭強峰先生

委員

歐陽均諾先生

畢東尼先生

陳俊傑先生

陳國華先生, BBS, MH

陳華裕太平紳士, MH

陳耀雄先生

鄭景陽先生

張琪騰先生

張培剛先生

張順華先生, MH

張姚彬先生

徐海山先生

洪錦鉉先生, MH

金 堅女士

簡銘東先生

黎樹濠太平紳士, BBS, MH

呂東孩先生

馬軼超先生

莫建成先生

顏汶羽先生

柯創盛先生, MH

潘任惠珍女士, MH

蘇冠聰先生

蘇麗珍太平紳士, MH

鄧咏駿先生

謝淑珍女士

葉興國太平紳士, MH

姚柏良先生, MH

增選委員

林 峰先生, MH
劉偉文先生

黃啟桑先生

秘書

黎穎彤女士

觀塘民政事務處行政主任（區議會）5

政府部門／機構代表

趙廣堅先生
高楚翹先生
鄭 屹先生
岑紫芬女士
陸碧儀女士
葉慧婷女士
李淑嫻女士
羅惠卿女士

觀塘民政事務處民政事務助理專員（2）
觀塘民政事務處高級行政主任（區議會）（署任）
觀塘民政事務處高級行政主任（地區管理）（署任）
觀塘民政事務處聯絡主任主管（地區設施）
觀塘民政事務處二級行政主任（地區管理）
康樂及文化事務署圖書館高級館長（觀塘區）
康樂及文化事務署觀塘區康樂事務經理
康樂及文化事務署觀塘區副康樂事務經理
（分區支援）

盧偉斌先生
鄭志榮先生
邢永聰先生
杜國基先生
鍾煥堯女士
王協力先生
陳克強先生
陳學文先生
陳鈺文先生
梁振聲先生
李勵明女士
丘俊銘先生
劉映彤女士
阮昭穎先生
葉俊傑先生

康樂及文化事務署高級行政主任（策劃事務）5
民政事務總署工程督察（九龍）2
民政事務總署助理工程督察（觀塘）
民政事務總署工程師（6）
民政事務總署建築師（工程）6
渠務署排水工程部總工程師／排水工程
渠務署排水工程部高級工程師／排水工程 2
渠務署排水工程部工程師／排水工程 22
阿特金斯顧問有限公司副董事
李景勳雷煥庭建築師有限公司高級主任建築師
李景勳雷煥庭建築師有限公司建築師
李景勳雷煥庭建築師有限公司建築助理
李景勳雷煥庭建築師有限公司建築助理
王歐陽（機電工程）有限公司屋宇裝備助理工程師
王志明建築工程有限公司助理工程師

缺席者：

陳振彬太平紳士，GBS

陳汶堅先生

符碧珍女士

何啟明先生

黃子健先生

黃春平先生

郭興城先生

潘惠芳女士

開會辭

主席歡迎委員會成員及政府各部門代表出席會議。

2. 主席表示，秘書處於會前收到郭興城委員的缺席通知，委員會備悉此事。

I. 通過上次會議記錄

3. 委員通過上次會議記錄。

II. 活化翠屏河第二階段公眾參與 (觀塘區議會地區設施管理委員會文件第 20／2018 號)

4. 渠務署總工程師王協力先生及高級工程師陳克強先生介紹文件。

5. 八名委員提出意見和查詢如下：

5.1 委員對項目設計表示讚賞，建議加強河道的排洪能力，並加快興建上游蓄洪池以作配合。委員又建議把近翠屏道橫跨鯉魚門道的行人天橋連接至港鐵觀塘站，並把鴻圖道對出的行人天橋延伸至麗港公園，以加強區內連繫。此外，委員提醒署方須留意智能水閘或會帶來噪音問題，而河道燈光的設計需留意光污染問題；

5.2 委員對項目表示支持，建議把河口行人天橋設計成無障礙通道，及考慮加設上蓋。委員提醒署方應確保河道水質良好及河道內有足夠的流量，並查詢智能水閘的運作事宜；

- 5.3 委員查詢改善河道水質的具體措施；
- 5.4 委員讚賞重置行人天橋斜道的設計，建議署方考慮延伸行人天橋以連接翠屏地區，並擴闊翠屏道的行人路；
- 5.5 委員對項目表示支持，建議署方在河道兩岸提供座椅；
- 5.6 委員建議署方在設計中加入親水概念，並關注潛在的蚊患問題；
- 5.7 委員指出擬建的行人天橋及觀景平台採用玻璃護欄，擔心護欄長期置於戶外會因氧化而造成危險，並提醒署方玻璃物料容易弄髒，需要定期清潔；以及
- 5.8 委員對項目表示支持，但關注人工濕地容易滋生蚊蟲，查詢濕地的管理安排，另建議署方採用懸臂式行人通道以擴闊翠屏道旁的行人路，委員亦建議署方考慮擴闊跨河通道並於適當位置加設上蓋。另外，委員建議署方考慮美化河口的行人天橋，並維持河道有足夠水流。

6. 渠務署代表回應如下：

- 6.1 署方感謝各委員的寶貴意見，會積極研究及優化項目設計；
- 6.2 防洪是渠務署的重要職責，署方會致力提升河道的排洪能力，並會配合有關部門就加強區內行人通道連接的研究。至於智能水閘和河道燈光的操作安排，署方表示會以利民便民為原則進行深化設計；
- 6.3 翠屏河位處潮間帶，海水在潮漲時會流入河道內。擬建智能水閘會隨著潮汐漲退而升降，以適當調節水位。另外，翠屏河上游、近安達臣道位置現時有一個已竣工及一個興建中的地下蓄洪池，署方會研究於旱季從上游位置的蓄洪池釋出蓄水，以維持河道內有適當的流量；
- 6.4 關於河道水質問題，渠務署近年一直聯同環境保護署於區內進行污水渠錯駁的調查並跟進有關個案，署方日後亦會繼續就改善水質工作與環境保護署保持緊密聯繫；

6.5 項目會於蓄水區設置近水休憩設施，例如人工浮島，以供市民觀賞河道；

6.6 新增的河道設施（包括護欄）會以安全為原則進行詳細設計，署方會致力做好河道日後的管理、維修及清潔工作；以及

6.7 擬建人工濕地的水體為流動性質，署方會把防蚊列入詳細設計的考慮因素，並會繼續收集公眾意見，以優化項目設計。

7. 主席總結，委員大致上支持是項工程，建議署方透過日後的公眾參與活動繼續收集意見，進一步優化項目。

8. 委員備悉有關文件。

III. 康樂及文化事務署觀塘區公共圖書館使用概況匯報 (觀塘區議會地區設施管理委員會文件第 21／2018 號)

9. 康樂及文化事務署（下稱「康文署」）葉慧婷女士介紹文件。

10. 兩名委員提出意見和查詢如下：

10.1 委員指出鯉魚門及順利邨公共圖書館的使用率低於其他圖書館，建議署方舉辦推廣活動，鼓勵市民到訪；以及

10.2 委員表示現時安達邨及安泰邨並無公共圖書館，建議在這兩個屋邨設立流動圖書館服務站，以滿足居民對圖書館服務的需求。

11. 康文署代表回應如下：

11.1 鯉魚門、秀茂坪及順利邨公共圖書館屬小型圖書館，設施較分區圖書館少，故其使用率一般會較觀塘區內三所分區圖書館（牛頭角、瑞和街及藍田公共圖書館）為低；以及

11.2 現時康文署共有十二輛流動圖書車，行程編排已頗為緊密，若增設流動圖書館服務站，需重新調配各區現有的服務站及資

源，將對現時使用服務的市民造成影響。署方已備悉委員的意見，待日後檢討圖書館服務時加以考慮。此外，康文署亦會積極發展「無牆圖書館」，透過資訊科技及流動應用程式為市民提供不受時地限制的圖書館服務。

12. 委員備悉有關文件。

**IV. 康樂及文化事務署於 2018 年 2 月至 3 月份在觀塘區內
設施管理的匯報**
(觀塘區議會地區設施管理委員會文件第 22／2018 號)

13. 康文署羅惠卿女士介紹文件。

14. 五名委員提出意見和查詢如下：

- 14.1 委員建議署方考慮在進行綠化工作時，維持季節性花卉的種植。此外，委員就觀塘海濱花園早前發生疑似風化案，查詢該花園是否屬康文署管轄範圍，以及署方如何處理事件；
- 14.2 委員指出康文署於連續三次會議的討論文件中，都就園藝保養合約表示「承辦商於部分場地的園藝保養工作未如理想」及「已向承辦商發出《致承辦商服務視察紀錄通知》及勸諭信」。就此，委員查詢三份文件所提及的是否同一承辦商；若是，康文署是否有相應的處理機制，以及「部分場地」所指的位置。委員亦詢問路邊花床的清潔及衛生工作由哪個部門負責。另外，委員對彩榮路公園增設長者健體設施工程表示支持；
- 14.3 委員對康文署建議的新工程項目表示支持，但認為坪石遊樂場乒乓球區加裝 2 至 3 支光管已可能解決燈光不足的問題，查問加裝 12 支 LED 光管的預算工程費用是否過高、場地因進行工程預計需關閉多久，以及觀塘海濱花園有否安裝閉路電視系統。委員建議署方於討論文件中列明工程支出的細項以增加透明度，又建議於坪石遊樂場安裝閉路電視系統；
- 14.4 委員要求加強區內公園的園藝保養工作，包括增加淋水次數和改善植物管理；以及

14.5 委員指出，根據《綠化總綱圖》於行人道加設路旁種植位置所帶來的園藝保養及環境衛生問題值得關注，建議增加植物修剪次數，以及在日後進行綠化工作時考慮種植容易打理的植物。

15. 康文署代表回應如下：

15.1 署方備悉委員對綠化工作的意見。署方表示觀塘海濱花園屬該署管轄範圍，署方如發現有嫌疑的風化案，會轉交執法部門跟進，並加強有關場地的日常巡查工作；

15.2 如承辦商於部分場地的園藝保養工作未如理想，康文署會向承辦商發出《致承辦商服務視察紀錄通知》及勸諭信，提醒承辦商需要跟進和改善有關問題；若情況未見改善，署方會按部門指引作進一步跟進。至於路邊花床的清潔及衛生工作一般是由食物環境衛生署負責；

15.3 由於坪石遊樂場乒乓球區的燈光系統已經老化，以致場內燈光分布不均，故建議的改善工程除加裝 12 支 LED 光管外，亦會就場內的燈光進行重組，以更符合環保效益及提升設施的水平。另外，署方已將坪石遊樂場安裝閉路電視系統的工程建議轉交有關工程部門進行可行性研究；以及

15.4 署方備悉委員意見，並表示會作出跟進。

16. 主席總結，委員關注康體場地的治安及環境衛生問題，建議秘書處於會後發信邀請各委員就康文署在區內場地設施的管理提出意見，並安排視察活動，以便康文署跟進。

[會後補註：秘書處已安排於 2018 年 6 月 15 日及 21 日進行觀塘區康樂設施及工程項目視察活動，並將委員意見轉交康文署跟進。]

17. 委員備悉有關文件，並通過文件第 8 段的建議。

V. 觀塘區社區會堂／中心使用概況
(觀塘區議會地區設施管理委員會文件第 23／2018 號)

18. 觀塘民政事務處（下稱「民政處」）岑紫芬女士介紹文件。

19. 委員對於處方分別在 2018 年 3 月及 4 月就「沒有到場使用設施」的違規事項各發出了三封警告信，查詢警告信是否發予同一團體，以及處方如何處理團體連續違規的情況。

20. 民政處代表回應，處方在 2018 年 3 月及 4 月分別向六個不同的團體就「沒有到場使用設施」的違規事項發出共六封警告信。每宗違規事項都會被記分及獨立計算，申請團體如在 12 個月內累計被記滿 10 分或以上，即會被禁止於其後兩個申請季度在當區租用社區會堂／社區中心（下稱「會堂」）及以作合辦機構／協辦機構使用會堂設施；或視乎違規情況，即時於當季停止租用會堂。

21. 委員備悉有關文件。

VI. 觀塘區康樂及文化工程進展報告

（觀塘區議會地區設施管理委員會文件第 24／2018 號）

22. 兩名委員提出意見和查詢如下：

22.1 委員指出東九文化中心的施工地點鄰近民居，擔心工地會因雨季到來而滋生蚊蟲，促請署方留意；以及

22.2 委員建議署方早日就是否發展晒草灣公園作出考慮。

23. 康文署代表盧偉斌先生備悉委員意見，並表示民政事務局將會就晒草灣公園的短期用途提出建議。至於晒草灣公園的長遠發展，康文署會參考《香港規劃標準與準則》的指引，並會就區內人口的變化、市民對康樂設施的需求、設施的使用情況及區議會的意見等因素，進行整體研究。

24. 主席建議，待康文署就晒草灣公園的發展作整體研究後，再徵詢委員會意見。

25. 委員備悉有關文件。

VII. 於牛頭角下邨興建東九文化中心進度報告

26. 康文署盧偉斌先生報告，整個工程項目進展順利。

27. 委員備悉有關資料。

VIII. 觀塘區地區小型工程視察活動報告
(觀塘區議會地區設施管理委員會文件第 25／2018 號)

28. 秘書介紹文件。

29. 委員備悉有關文件。

IX. 地區小型工程計劃進度報告
(觀塘區議會地區設施管理委員會文件第 26／2018 號)

30. 李景勳雷煥庭建築師有限公司（下稱「顧問公司」）梁振聲先生介紹文件。

31. 三名委員提出意見和查詢如下：

31.1 委員查詢鯉魚門設施改善工程的具體內容；

31.2 委員對平田邨往鯉魚門道修建石級行人通道工程的開展感到高興，向負責跟進工程的民政處同事表示感謝及讚賞，並期望工程能夠早日完成；以及

31.3 委員查詢坪石邨的士站附近設置避雨亭工程被擱置的原因。

32. 民政處代表回應，鯉魚門設施改善工程主要包括重置損毀的避雨亭及渠蓋，更換宣傳板及馬背村的郵箱框架等。

33. 顧問公司代表回應，由於坪石邨的士站附近擬設置避雨亭的地點行人路面較為狹窄，上蓋可覆蓋面小，加上會妨礙輪椅使用者經過，故建議擱置工程。

34. 主席建議，待房屋署就坪石邨的士站附近設置避雨亭工程回覆地權範圍及樹木遷移等問題後，再將工程建議提交委員會討論。

35. 委員備悉有關文件。

X. 觀塘地區小型工程 2018／2019 新建議項目
(觀塘區議會地區設施管理委員會文件第 27／2018 號)

36. 民政處鄭屹先生介紹文件。

37. 委員對觀塘社區中心空調系統優化工程的預算上限修訂建議表示支持。

38. 主席提醒處方在整理工程報價資料時，須留意當中載列細節。

39. 委員通過有關文件。

XI. 動議：要求康樂及文化事務署盡快擴建佐敦谷游泳池以
配合觀塘西人口的急劇增加
(觀塘區議會地區設施管理委員會文件第 28／2018 號)

40. 主席報告早前收到一項動議，動議人為張姚彬委員及葉興國委員，和議人共 25 名委員，包括陳振彬委員、洪錦鉉委員、歐陽均諾委員、陳俊傑委員、陳國華委員、陳華裕委員、陳耀雄委員、鄭強峰委員、張琪騰委員、張培剛委員、張順華委員、符碧珍委員、何啟明委員、徐海山委員、金堅委員、簡銘東委員、黎樹濠委員、呂東孩委員、馬軼超委員、顏汶羽委員、柯創盛委員、蘇麗珍委員、鄧咏駿委員、黃春平委員，以及姚柏良委員。

41. 動議人介紹文件。

42. 十一名委員提出意見和查詢如下：

42.1 委員查詢動議是要求擴建還是改建佐敦谷游泳池、新落成屋苑預計為區內帶來的人口數目、現時佐敦谷游泳池的使用率，以及是否有需要加建游泳池以滿足區內市民的需求；

- 42.2 委員認為現時佐敦谷游泳池的訓練池及嬉水池對市民吸引力不足，建議將訓練池擴建為標準泳池；
- 42.3 委員支持動議，認為佐敦谷游泳池擴建後可以服務周邊區域更多居民，建議參考以往擴建觀塘游泳池的例子；
- 42.4 委員指出現時觀塘區只有觀塘游泳池設有標準泳池，故支持擴建佐敦谷游泳池，以推廣運動及培訓運動人才；
- 42.5 委員認為動議標題清晰，表示佐敦谷游泳池最初的興建目的是為區內家庭提供親子嬉水設施，故以嬉水池為主，訓練池為輔的形式興建。委員建議康文署檢視現時市民對嬉水池的需求，並研究如何改善現有的泳池設施；
- 42.6 委員認為擴建游泳池的用意在於增加其功能及可容納人數，而具體設計可交由康文署考慮；
- 42.7 委員認為嬉水池可為區內家庭提供親子嬉水設施，同意在保留嬉水池的情況下增加佐敦谷游泳池的游泳設施；以及
- 42.8 委員建議署方考慮增加室內暖水游泳池設施。

43. 康文署代表回應，現時觀塘區共有三個游泳池，包括觀塘游泳池、佐敦谷游泳池及藍田游泳池，已符合《香港規劃標準與準則》最少兩個泳池的要求。康文署在規劃新的體育設施和改善現有設施時，除了參考《香港規劃標準與準則》外，亦會考慮其他相關因素，包括現時於全港及地區層面提供的體育設施、體育發展的政策目標、現有設施的使用率、人口變化、區議會的意見、可供使用的土地、成本效益及技術可行性等。署方備悉委員意見，並會不時檢視上述各方面的因素，以便在設施規劃條件、政策及資源分配的許可下，作為日後策劃興建新康體設施或改建康體設施工程項目的參考。根據記錄，佐敦谷游泳池於 2017 年泳季期間只有 5 節曾出現入場人次達至最高可容納人次的情況。一般而言，該泳池仍有空間吸納更多泳客。

44. 經表決後，動議以 24 票贊成、0 票反對及 0 票棄權獲得通過。

（授權票：張琪騰委員 授權 張培剛委員
柯創盛委員 授權 張姚彬委員）

45. 主席呼籲署方積極跟進上述動議。

XII. 地區設施管理委員會 2018／19 年度財政報告
(觀塘區議會地區設施管理委員會文件第 29／2018 號)

46. 秘書介紹文件。

47. 委員通過有關文件。

XIII. 其他事項

建議於通往觀塘上配水庫花園的行人徑加設照明設施

48. 主席表示，水務署代表已於 2018 年 4 月 10 日就通往觀塘上配水庫花園的行人徑加設照明設施一事與相關委員會面。根據署方提供的補充資料，上述行人徑大部分路段並非在水務署管轄範圍內，但水務署及康文署均有通行權。由於觀塘上配水庫花園由康文署負責管理和運作，水務署建議有關部門參考康文署早前於通往油麻地配水庫休憩花園及東何文田配水庫遊樂場的行人徑加設照明設施的例子，在通往觀塘上配水庫花園的行人徑加設照明設施。

49. 委員表示，上述行人徑為通往觀塘上配水庫花園的主要道路，由於該花園由康文署負責管理和運作，署方有責任確保通往花園的道路有足夠的照明，以保障使用者的安全。委員希望康文署能審慎考慮市民的需要，盡快加設照明設施。

50. 主席建議把上述行人徑納入為委員會視察活動地點之一，並呼籲各委員參與視察。

XIV. 下次會議日期

51. 下次會議定於 2018 年 7 月 19 日（星期四）下午 2 時 30 分舉行。

52. 議事完畢，會議於下午 4 時 45 分結束。

本會議記錄於 2018 年 7 月 19 日獲得通過。

觀塘區議會秘書處

2018 年 7 月

Appendix K
Harbourfront Commission Task Force for Kai
Tak Harbourfront Development –
Discussion Paper for Meeting on 23 May 2018

Task Force on Kai Tak Harbourfront Development

For discussion
on 23 May 2018

TFKT/08/2018

Revitalisation of Tsui Ping River

PURPOSE

This paper aims to brief Members on the project “Revitalisation of Tsui Ping River” (the Project) to be implemented by the Drainage Services Department, and to seek Members’ views on the project.

BACKGROUND

2. In recent years, the Government has been dedicated to turning Kowloon East into a Green Core Business District. The Development Bureau proposed the Energizing Kowloon East Conceptual Master Plan and put forward the concept of transforming the King Yip Street nullah in Kwun Tong into Tsui Ping River.

3. The King Yip Street nullah, of a length of about one kilometre, was constructed more than 50 years ago, and constitutes the downstream section of the stormwater drainage network in central Kwun Tong (see location plan at **Annex A**). The existing nullah is concrete-lined. The Drainage Services Department (DSD) aims to convert the existing nullah into a unique river with environmental, ecological and landscaping upgrading works. The Project will also enhance the connectivity and walkability with the adjacent pedestrian network.

4. The Project includes two stages of Public Engagement (PE). Stage 1 PE was completed in March 2017. A series of PE activities including community workshop, focus group meeting and roving

Task Force on Kai Tak Harbourfront Development

For discussion
on 23 May 2018

TFKT/08/2018

exhibitions were held. Public views were collected through various channels during the PE period. We also briefed the Task Force on Kai Tak Harbourfront Development at its meeting held on 13 January 2017 on the preliminary design scheme of the Project.

MAJOR COMMENTS FROM STAGE 1 PE

5. During the Stage 1 PE, the public extensively supported the Project. The major comments received include:

(a) River Revitalisation

The public supported the revitalisation proposals. The public considered that the Project should ensure adequate hydraulic capacity for the revitalised Tsui Ping River and suggested setting up flood warning and surveillance system to safeguard visitors on the proposed floating pontoon. The public also raised the concern about water quality.

(b) Connectivity and Walkability

The public considered that the access ramp of the Lei Yue Mun Road Footbridge should be re-provided under the Project. The public also suggested that additional pedestrian accesses across Wai Fat Road and at the estuary of Tsui Ping River should be provided to enhance connectivity with the surrounding areas.

(c) Vibrant Public Space

The public supported the provision of water-friendly facilities to promote water-friendliness. The public

Task Force on Kai Tak Harbourfront Development

For discussion
on 23 May 2018

TFKT/08/2018

suggested the Project should introduce artistic elements to foster a vibrant public space. The public also considered guided tours, information gallery and educational activities should be provided for the revitalised Tsui Ping River.

THE PROJECT PROPOSAL

6. Taking into account of public's opinions, we have refined our project proposal. Implementation of the Project will serve a number of key objectives–

(a) Revitalising the river

Tsui Ping River is located in the centre of Kwun Tong District. By virtue of its excellent geographical location, Tsui Ping River is a precious riverside public space in the urban areas. The Project will turn Tsui Ping River into a new landmark where the public can enjoy the river view and carry out leisure activities.

Tsui Ping River is located in the intertidal area. The water level changes with the tides and the river bed will be exposed during low tide. We plan to install at the downstream a water gate to create a water storage area. By regulating the level of the water gate, water in the storage area can plunge to the downstream creating a waterfall effect. Besides, we will also set up water-friendly features like floating pontoon at the water storage area to enrich the scenery and ambience of the river.

Task Force on Kai Tak Harbourfront Development

For discussion
on 23 May 2018

TFKT/08/2018

The Project will enhance the flood prevention capacity of the river. We will conduct detailed drainage impact assessment to ensure compliance with the required flood protection standards and set up weather monitoring system for alerting the public. In addition, DSD has been working collaboratively with the Environmental Protection Department (EPD) to identify expedient connections at the upstream with a view to improving the water quality of the river.

(b) Improving walkability and connectivity

Echoing with the concept of a “Walkable Kowloon East”, we will construct pedestrian walkways on both sides of the river, with elevated walkways and landscaped decks spanning over the river to enhance connectivity with the surrounding areas. Additional pedestrian accesses across Wai Fat Road and at the estuary of Tsui Ping River will be included in the Project to address public concerns received in Stage 1 PE.

(c) Fostering a vibrant riverine public space

Tsui Ping River, coupled with the adjacent Tsui Ping River Garden, the Kwun Tong Promenade and the arts and cultural spaces beneath the Kwun Tong Bypass, will provide leisure public space with great diversity in nature to the Kwun Tong District. The Project will inject vibrancy and turn Tsui Ping River into a new landmark where the public can enjoy the river scenery and carry out leisure activities. We will continue to explore the design and use of public space with various stakeholders.

Task Force on Kai Tak Harbourfront Development

For discussion
on 23 May 2018

TFKT/08/2018

7. Through water features, landscaping, ecological and environmental enhancement, the Project aims at creating a green river channel with water scenery and amenity for the community. The works under Project comprises the following:-

- (a) revitalisation of the existing nullah through the provision of waterscape design and water features, such as water gate, floating pontoon and in-stream plantation;
- (b) provision of walkways along / across the river to enhance connectivity and walkability;
- (c) provision of landscaped decks and amenity public space;
- (d) modification and face-lifting of the existing footbridge across Lei Yue Mun Road; and
- (e) streetscape enhancement of existing streets adjacent to Tsui Ping River.

8. The proposed layout plan and photomontages are shown in **Annexes B** and **C** respectively.

COMPLIANCE WITH HARBOUR PLANNING PRINCIPLES

9. We consider that the proposal aligns with the Harbour Planning Principles in the following aspects –

(a) *Principle 1 – Preserving Victoria Harbour*

The works will not involve any reclamation works and the objective to preserve the harbour is fulfilled.

(b) *Principle 2 – Stakeholder Engagement*

Engagement with stakeholders is conducted through a two-stage PE exercise. The Stage 1 PE was conducted between January and March 2017, while the Stage 2 PE is currently underway and will last until mid-July 2018. The public gave positive feedback and expressed extensive support to the Project in the Stage 1 PE.

(c) *Principle 3 – Sustainable Development*

The Project will revitalise King Yip Street to enhance the sustainability of the existing drainage facility in urban area. The Project will also enhance the community environment and provide public space to cater for the social and leisure needs of the general public.

(d) *Principle 4 – Integrated Planning*

We have been liaising with the relevant departments / offices taking forward the relevant projects, such as the Tsui Ping River Garden, Upgrading of Kwun Tong Preliminary Treatment Works and Enhancement Works for Kwun Tong Sewage Pumping Station, to better coordinate design and interfacing issues.

We have also been collaborating continuously with EPD to identify expedient connections at the upstream of the Tsui Ping River, with a view to improving water quality in the revitalised river.

Task Force on Kai Tak Harbourfront Development

For discussion
on 23 May 2018

TFKT/08/2018

(e) Principles 5, 6 and 8 – Proactive Harbour Enhancement, Vibrant Harbour and Public Enjoyment

The Project aims at creating a green river channel with water scenery and amenity for the community. The Project will inject vibrancy and turn Tsui Ping River into a new landmark where the public can enjoy the river scenes and carry out leisure activities. Additional amenity spaces will be formed under the Project for public enjoyment.

(f) Principle 7 – Accessible Harbour

The Project will provide new walkways to enhance the connectivity and walkability between the harbourfront and the hinterland. In particular, an elevated walkway across the Tsui Ping River at its estuary will be constructed under the Project to enhance the connectivity along the harbourfront.

WAY FORWARD

10. The project is currently under the detailed design stage. We are conducting the Stage 2 PE to introduce our latest design scheme and solicit further views from the public.

11. After the Stage 2 PE, we will refine the project design and arrange for statutory gazettal in the 3rd quarter of 2018.

Task Force on Kai Tak Harbourfront Development

For discussion
on 23 May 2018

TFKT/08/2018

VIEWS SOUGHT

12. Members' views on the project are welcome.

Drainage Services Department
May 2018

Annex A Location Plan of King Yip Street Nullah

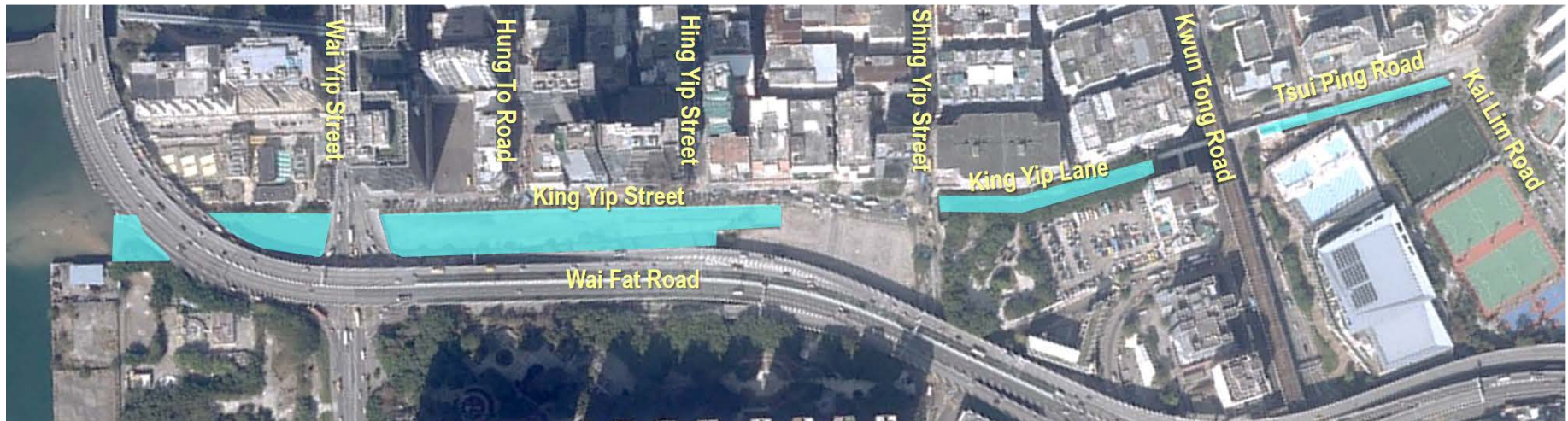
Annex B Project Layout Plan of Revitalisation of Tsui Ping River

Annex C Photomontages of Revitalisation of Tsui Ping River

Task Force on Kai Tak Harbourfront Development

Annex A

Location Plan of King Yip Street Nullah



Legend : Extent of King Yip Street Nullah

Project Layout Plan of Revitalisation of Tsui Ping River



Task Force on Kai Tak Harbourfront Development

Annex C

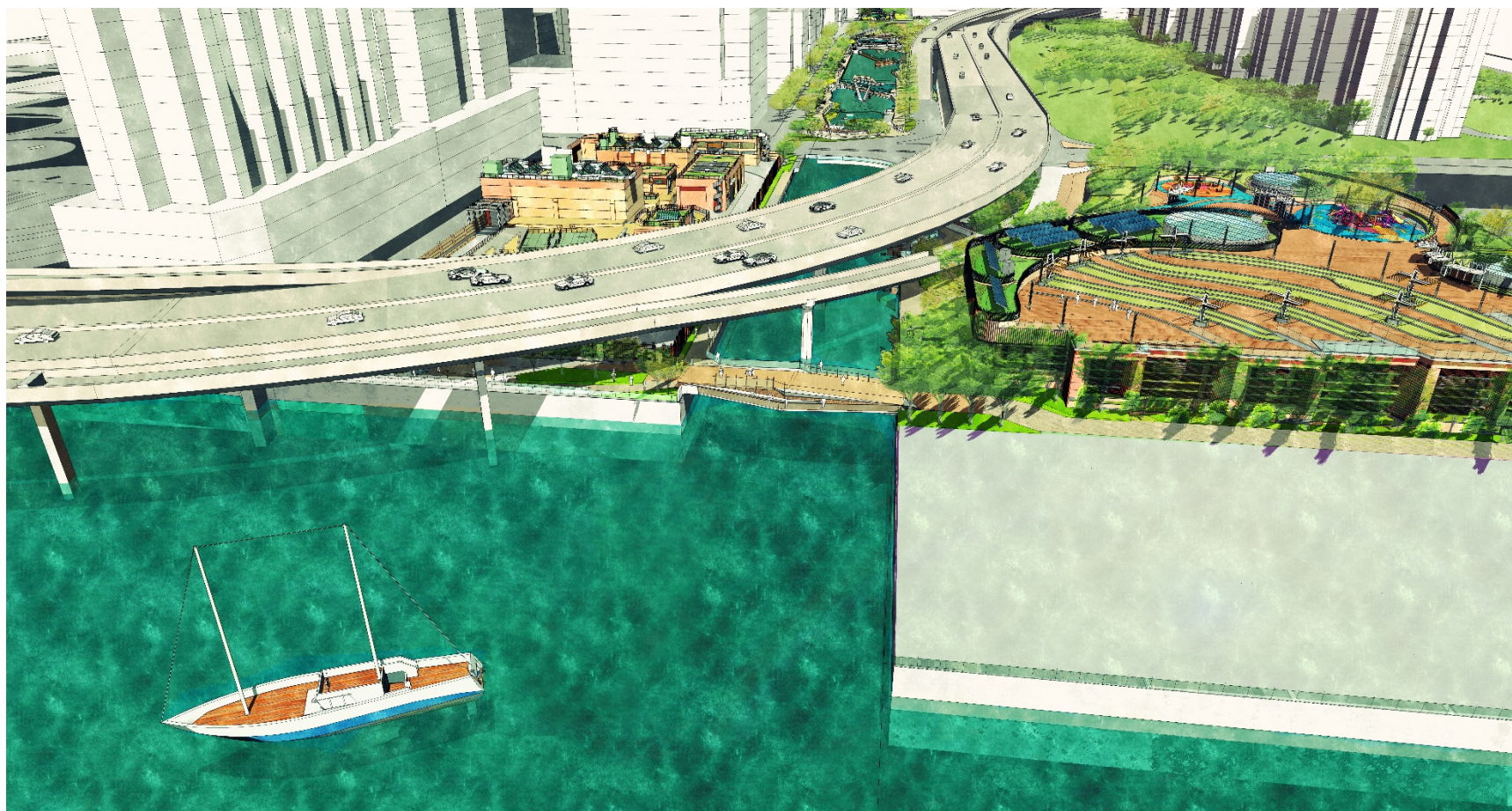
Photomontage for Revitalisation of Tsui Ping River (Section between Shing Yip Street and Wai Yip Street)



Task Force on Kai Tak Harbourfront Development

Annex C

Photomontage for Revitalisation of Tsui Ping River (Estuary of Tsui Ping River)



Appendix L
Harbourfront Commission Task Force for Kai
Tak Harbourfront Development –
Presentation Materials for Meeting
on 23 May 2018



Revitalise • Connect • Share

Harbourfront Commission
Task Force on Kai Tak Harbourfront Development

Revitalisation of Tsui Ping River
Stage 2 Public Engagement

(Paper No. TFKT 08/2018)

23 May 2018

1

Content



Revitalise • Connect • Share

- ▶ Project Background
- ▶ Project Progress & Public Engagement
- ▶ Updated Design Scheme

▶ 2

Project Background

Project Background



Revitalise • Connect • Share

- ▶ To revitalise the existing nullah into a unique river with environmental, ecological and landscaping upgrading
- ▶ To enhance walkability and connectivity with the neighbourhood, so as to create synergy and enable the public to enjoy an accessible and green community



▶ 4

Project Objectives



1. Revitalising the River



2. Improving Walkability and Connectivity



4. Reducing Flood Risk



3. Fostering a Vibrant Riverine Public Space



▶ 5

Project Progress & Public Engagement

Project Progress



- ▶ Stage 1 Public Engagement – Jan to Mar 2017
- ▶ Detailed Design Stage – commenced in Dec 2017
- ▶ Stage 2 Public Engagement – May to Jul 2018

▶ 7

Major Views in Stage 1 PE



- ▶ **Revitalising the River**
- ▶ **Walkability and Connectivity**
- ▶ **Fostering Public Space**

▶ 8

Activities of Stage 2 PE

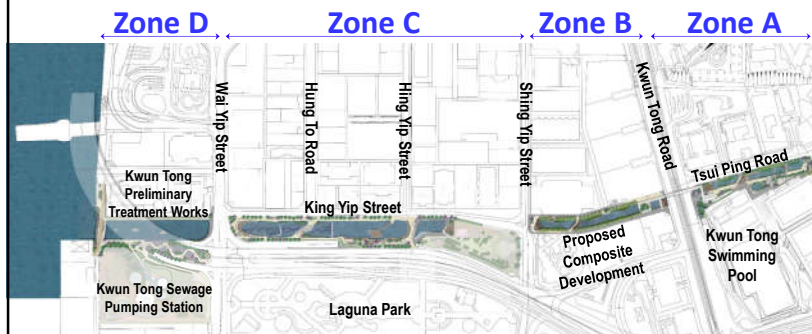


- ▶ Stage 2 PE Period (17 May to 16 Jul)
- ▶ Consultation with Kwun Tong District Council (17 May)
- ▶ Consultation with Task Force on Kai Tak Harbourfront Development under Harbourfront Commission (23 May)
- ▶ Roving Exhibitions (17 May to 6 Jul)
- ▶ Community Workshops
 - Sai Cho Wan Neighbourhood Community Centre (16 Jun)
 - Kwun Tong Community Centre (7 Jul)
- ▶ Project Website: www.tsuipingriver.hk

▶ 9

Updated Design Scheme

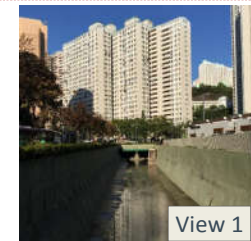
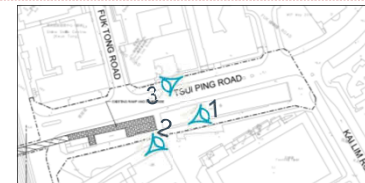
Overall Layout



▶ 11

Zone A

(Between Kai Lim Road to Kwun Tong Road)



View 1



View 2



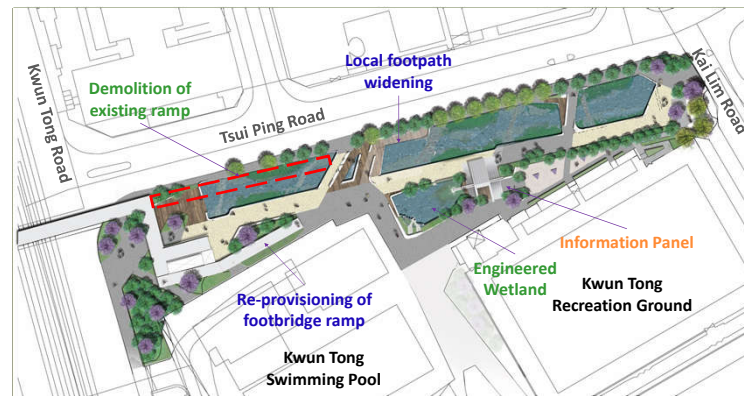
View 3

▶ 12

Zone A

(Between Kai Lim Road to Kwun Tong Road)

Revitalise • Connect • Share



▶ 13

Zone A

(Between Kai Lim Road to Kwun Tong Road)

Revitalise • Connect • Share



▶ 14

Zone A

(Between Kai Lim Road to Kwun Tong Road)

Revitalise • Connect • Share

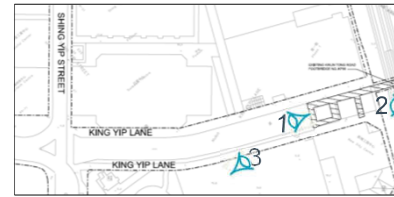


▶ 15

Zone B

(Between Kwun Tong Road to Shing Yip Street)

Revitalise • Connect • Share



▶ 16

Zone B

(Between Kwun Tong Road to Shing Yip Street)

Revitalise • Connect • Share



17

Zone B

(Between Kwun Tong Road to Shing Yip Street)

Revitalise • Connect • Share

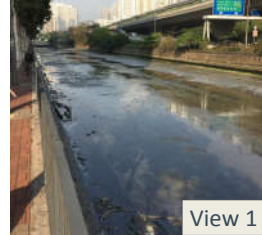


18

Zone C

(Between Shing Yip Street and Wai Yip Street)

Revitalise • Connect • Share

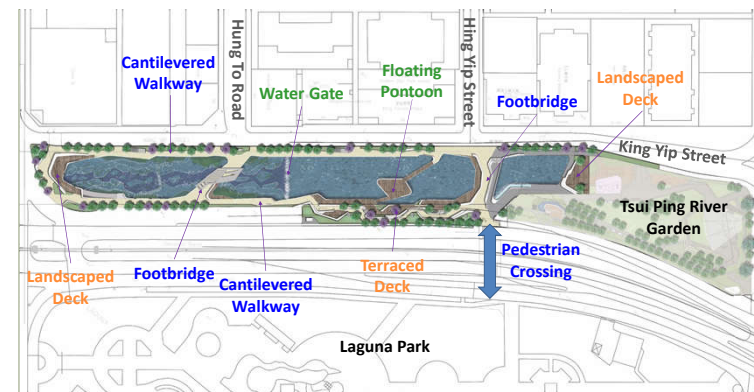


19

Zone C

(Between Shing Yip Street and Wai Yip Street)

Revitalise • Connect • Share



20

Zone C

(Between Shing Yip Street and Wai Yip Street)

Revitalise • Connect • Share

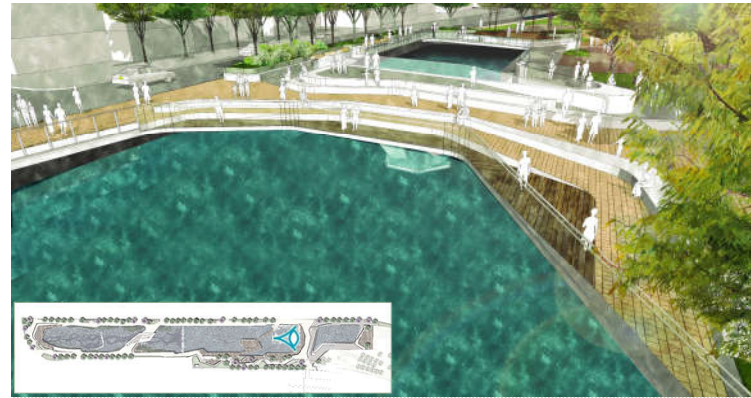


▶ 21

Zone C

(Between Shing Yip Street and Wai Yip Street)

Revitalise • Connect • Share



▶ 22

Zone C

(Between Shing Yip Street and Wai Yip Street)

Revitalise • Connect • Share



▶ 23

Zone C

(Between Shing Yip Street and Wai Yip Street)

Revitalise • Connect • Share

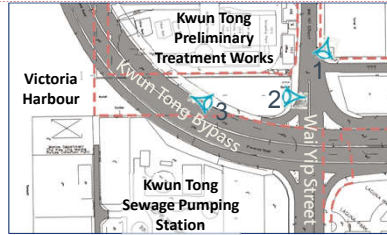


▶ 24

Zone D

(Between Wai Yip Street and Victoria Harbour)

Revitalise • Connect • Share



View 2



View 1

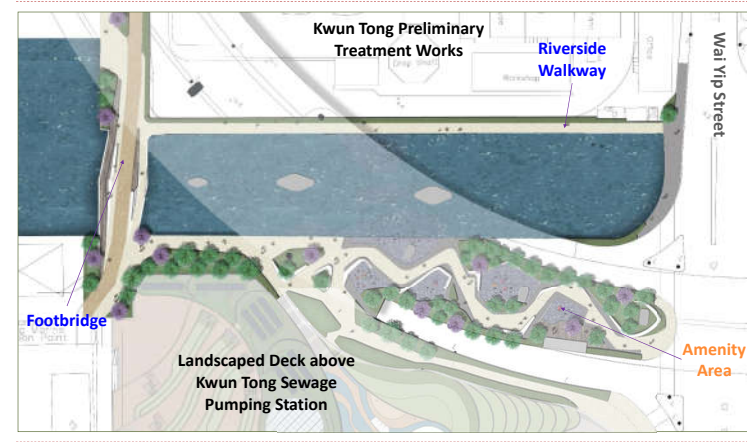
View 3

25

Zone D

(Between Wai Yip Street and Victoria Harbour)

Revitalise • Connect • Share



26

Zone D

(Between Wai Yip Street and Victoria Harbour)

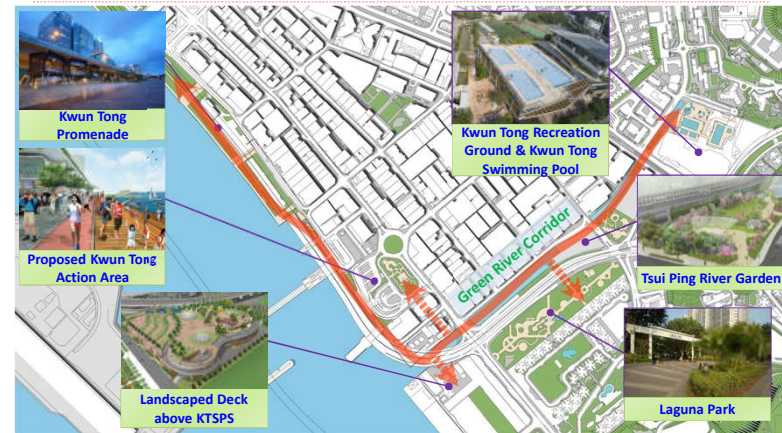
Revitalise • Connect • Share



27

Green River Corridor

Revitalise • Connect • Share



28



Appendix M
Harbourfront Commission Task Force on Kai Tak
Harbourfront Development –
Minutes of Meeting on 23 May 2018

Task Force on Kai Tak Harbourfront Development

Minutes of Thirty-first Meeting

Date : 23 May 2018 (Wednesday)

Time : 3:00 p.m.

Venue : Conference Room (Room G46), Upper Ground Floor, Hong Kong
Heritage Discovery Centre, Kowloon Park, Tsim Sha Tsui

Present

Mr Vincent NG Chairman

Organization Members

Mr Andy LEWIS	Representing Business Environment Council
Mr LEUNG Kong-yui	Representing Chartered Institute of Logistics and Transport in Hong Kong
Mrs Karen BARRETTO	Representing Friends of the Earth
Mr Anthony CHEUNG	Representing Hong Kong Institute of Architects
Ms Connie CHEUNG Mei-ngor	Representing Hong Kong Institute of Landscape Architects
Prof TANG Bo-sin	Representing Hong Kong Institute of Planners
Sr Raymond CHAN Yuk-ming	Representing Hong Kong Institute of Surveyors
Mr TAM Po-yiu	Representing Hong Kong Institute of Urban Design
Ir Raymond CHAN Kin-sek	Representing Hong Kong Institution of Engineers
Mr Paul ZIMMERMAN	Representing Society for Protection of the Harbour
Mr Ken SO Kwok-yin	Representing the Conservancy Association

Individual Members

Mr CHAN Ka-kui	Individual Member
Ms Kelly CHAN	Individual Member
Mr NGAN Man-yu	Individual Member
Mr Tony TSE Wai-chuen	Individual Member
Prof Wallace CHANG	Co-opted Member

Official Members

Ms Doris HO	Deputy Secretary (Planning & Lands) 1, DEVB
Miss Rosalind CHEUNG	Principal Assistant Secretary (Harbour), DEVB
Miss Ellen CHENG	Senior Manager (Tourism) 41, Tourism Commission (TC)
Mr Peter WONG	Assistant Commissioner/Urban, Transport Department (TD)
Mr George MAK	Chief Engineer/East 5, Civil Engineering and Development Department (CEDD)
Mr Michael CHIU	Chief Executive Officer (Planning) 1, Leisure and Cultural Services Department (LCSD)
Mr Tom YIP	District Planning Officer/Kowloon, Planning Department (PlanD)
Mr Ian CHENG	Secretary

Absent with Apologies

Mr Hans Joachim ISLER	Individual Member
Ms Vivian LEE	Individual Member
Mr HE Hua-han	Co-opted Member
Mr Derek SUN	Co-opted Member
Mr Terence LEE	Representing Real Estate Developers Association of Hong Kong

For Item 3

Mr David CHAK	Project Director 2, ArchSD
Mr Michael LI	Chief Project Manager 202, ArchSD
Mr Patrick HAU	Senior Manager (Capital Projects) 5, HA
Mr Matthew CHENG	Manager (Capital Projects) 51, HA
Ms Elise CHAN	Associate Director, Arup
Mr Ronson LUI	Director, Wong Tung & Partners Ltd

For Item 4

Ms Brenda AU	Head of EKEO
Mr Edwin WONG	Deputy Head of EKEO
Ms Echo LEE	Senior Project Facilitation Manager, EKEO

For Item 5

Mr WONG Hip-lik, Thomas	Chief Engineer/Drainage Projects, DSD
Mr CHAN Hak-keung	Senior Engineer/Drainage Projects 2, DSD
Ms Winsy CHOI	Engineer/Drainage Projects 2, DSD
Ms Joyce TANG	Senior Works Consolidation Manager, EKEO
Mr Jeffrey CHAN	Associate Director, Atkins China Ltd

The Chair welcomed all to the 31st meeting of the Task Force on Kai Tak Harbourfront Development (KTTF).

The Chair announced that **Mr George MAK**, Chief Engineer/East 5 of Civil Engineering and Development Department (CEDD), attended on behalf of Mr Anthony LO. **Mr Michael CHIU**, Chief Executive Officer (Planning) 1 of Leisure and Cultural Services Department, attended on behalf of Mrs Doris FOK. **Miss Ellen CHENG**, Senior Manager of Tourism Commission (TC), attended on behalf of Ms Wendy CHUNG.

Item 1 Confirmation of Minutes of the last Meeting

1.1 **The Chair** informed Members that the draft minutes of 30th KTTF meeting were circulated to Members for comments on 17 May 2018. The minutes that incorporated Members' comments were further circulated on 21 and 23 May respectively.

1.2 Given that some comments were received right before the meeting, **the Chair** decided to postpone the confirmation of minutes at the next meeting.

Item 2 Matters Arising

A. Landing Facilities and Water Sports Activities in Kai Tak Approach Channel (KTAC) (paragraphs 4.37 (a) and (e) of the minutes of the 30th meeting)

Discussion

2.1 **Mr Paul ZIMMERMAN** recapped from the minutes of the last meeting that the Government was keen to identify suitable locations for water sports activities in KTAC and Kwun Tong Typhoon Shelter (KTTS). He suggested providing landing steps and other ancillary facilities to support water sports development in the area.

2.2 **The Chair** agreed that the provision of landing facilities could activate the KTAC and thus encourage water sports development, which was in line with the vision of KTTF. It has also been agreed in discussions at the Task Force on Water-land Interface meetings that regardless of whether they are in active usage, all existing landing steps along the Harbour should be preserved for re-activation in future.

B. Possible Facilities on the Landscape Deck above the underpass of Road D3 (Metro Park Section)

Discussion

2.3 **Mr Paul ZIMMERMAN** opined that KTO should make provisions for structures to be built on top of the underpass. **Mr Andy LEWIS** said the proposal was worthy of consideration even if it might incur higher construction costs.

2.4 Instead of building large structures on top of the landscaped

deck, **Mr TAM Po-yiu** suggested having smaller structures, such as billboards or kiosks, along the waterfront fronting KTAC.

2.5 **The Chair** said that the proposed landscape deck above Road D3 (Metro Park Section) would be an important connector between the Metro Park and the waterfront area and should be able to accommodate one-storey atop. He requested KTO to provide figures on loading capacity.

2.6 **Mr George MAK** said that he would provide the loading information to facilitate the Task Force's consideration. While appreciating Members' proposal, the additional structures to be built on top of the landscaped deck should not undermine pedestrian connectivity.

Way Forward

2.7 **Miss Rosalind CHEUNG** responded that Members had expressed similar comments in previous meetings. She advised KTO to update Members by providing layout plans and figures on loading capacity at the next meeting.

2.8 **The Chair** said that KTO should follow-up Mr ZIMMERMAN's comments on the provision of landing facilities in KTAC and report back to the Task Force. He further concluded that the Task Force supported any suggestions that could activate the use of harbourfront areas. Informal sessions could be arranged to update Members before the next meeting.

Item 3 New Acute Hospital at Kai Tak Development Area
(Paper No. TFKT/06/2018)

3.1 **Ir Raymond CHAN Kin-sek** declared that his company was involved in the project and the Chair decided that he could remain in the meeting but refrain from making comments.

Briefing by the project team

3.2 **Mr Patrick HAU** from the Hospital Authority and **Mr Ronson LUI** from Wong Tung & Partners Ltd briefed Members on the preliminary design concept of the New Acute Hospital (NAH) with the aid of a PowerPoint.

Discussion

Connectivity Network

3.3 For the link bridge connecting Block C and Block D, **Mr Tony TSE** noted that the public could only come down to the pedestrian level via the staircases built outside the building. He considered the staircases visually intrusive and suggested incorporating them into Block D.

3.4 **Mr Andy LEWIS** understood that the sections of waterfront promenade fronting Hong Kong Children Hospital (HKCH) and NAH would be constructed by different agents. He hoped that there would be seamless connectivity network between two hospitals and their corresponding sections of promenade.

3.5 **Mr Paul ZIMMERMAN** and **Mr Anthony CHEUNG** urged

the project proponent to incorporate greening and seating in the link bridges for public so as to enhance walkability. They viewed that the bridges should not fulfil mere basic transport needs.

3.6 **Mr TAM Po-yiu** said that the promenade sections of HKCH and NAH were separated by Shing Fung Road. He further suggested widening and shifting the pedestrian crossing towards the waterfront, with a view to enhancing the connectivity between the two promenade sections. He noted that a pedestrian crossing was planned across Shing Cheong Road, connecting HKCH and Block A of NAH. In view of this, he queried about the road disposition at different levels.

3.7 For the link bridges connecting Block D and Block E on different floors, **Mr Anthony CHEUNG** asked whether the bridges would be opened for public access round the clock. He also asked whether there would be any proposals to enhance the connectivity between Kowloon Bay and the waterfront.

3.8 **Mr LEUNG Kong-yui** suggested providing wider link bridges connecting different hospital blocks so as to cope with the frequent flow of staff, patients and visitors. Noting that most of the hospitals were operating round the clock, the link bridges should also be opened for the whole day. He also suggested allowing 24-hour access between the hinterland and the waterfront.

3.9 **Ms Kelly CHAN** said that both covered and uncovered link bridges should be provided for users, which could cater for different needs under different weather conditions.

3.10 **Mr CHAN Ka-kui** suggested having a direct access between the podium garden and the waterfront promenade.

3.11 **Mr Wallace CHANG** asked whether there would be any themed spatial connections between the hospital blocks and the waterfront promenade.

3.12 Instead of connecting the NAH and HKCH by link bridges, **Sr Raymond CHAN Yuk-ming** suggested constructing a large and sound-proof landscaped deck to integrate the two hospitals.

3.13 **Mr Patrick HAU** assured that access via link bridges for public between the hinterland and the waterfront would be provided on a 24-hour basis. In response to Mr TAM's enquiry, he supplemented that HKCH and Site A of NAH is separated by Shing Cheong Road and the Central Kowloon Route (CKR) Trunk Road T2 which would pass through Shing Cheong Road by an underpass.

Design of the Waterfront Promenade

3.14 **Mr Paul ZIMMERMAN** and **Mr LEUNG Kong-yui** wished to have sight of the design brief later.

3.15 Given that the promenade sections of NAH and HKCH would be constructed by different agents, **Ms Kelly CHAN** stressed the importance of design coherence between the two.

3.16 **Mr Paul ZIMMERMAN** said that landing steps should be provided at the eastern tip of the NAH promenade to improve the water-land interface.

3.17 **Sr Raymond CHAN Yuk-ming** opined that some ancillary facilities like lavatories and tuck shops could be provided inside the hospital wing so as to better support the users of the promenade.

3.18 **Mr Patrick HAU** said that the team would further liaise with the Leisure and Cultural Services Department (LCSD) on the facilities to be provided along the promenade.

Management of Waterfront Promenade

3.19 In response to Chair's enquiry on division of labour, **Mr Ronson LUI** replied that LCSD would be responsible for management, while HA and the consultant team would be responsible for the design and construction of the promenade.

Landscape and Architectural Design

3.20 **Mr Andy LEWIS** asked whether microclimate design would be adopted to enhance the comfort level for hospital users.

3.21 **Ms Kelly CHAN** enquired if the height of Block D and Block E would be similar to that of HKCH to achieve visual harmony. She appreciated that the concept of wellness had been incorporated into the design and further advised the project team to strike a balance between infectious control and connectivity. **Ms Connie CHEUNG** and **Mr Ken SO** concurred. Ms CHEUNG added that the wellness of visitors and employees of the hospital should also be taken care of.

3.22 **Mr Patrick HAU** responded that the landscape design of NAH was still at a preliminary stage and the project team would further incorporate the concepts of health and wellness into the design.

Accessibility

3.23 **Mr Paul ZIMMERMAN** asked whether bicycle parking spaces would be provided for NAH staff. Noting that NAH would be closed to one of the stations planned under the Environmentally Friendly Linkage System (EFLS), he asked for updates of the project.

3.24 **Mr LEUNG Kong-yui** enquired about the public transport services for NAH and HKCH.

3.25 **Mrs Karen BARRETTO** asked about the number of parking spaces in the hospital. Owing to the ageing problem, she suggested introducing electric shuttle bus service between the hospital and the hinterland areas.

3.26 **Mr Patrick HAU** responded that the KTO had commissioned consultant to undertake a Detailed Feasibility Study on EFLS. The project team would further co-ordinate with relevant departments to dovetail the two projects. To further improve accessibility, laybys and mini-bus stops would be provided at the entrance of the hospital. The team would further explore the feasibility of providing bicycle parking spaces.

Way Forward

3.27 **The Chair** concluded that Members have no adverse comments on the preliminary design concept of the hospital. He hoped the project team would address Members' concerns on connectivity and the interface between the hospital and the promenade and report to the Task Force with the detailed design in due course.

Item 4 Proposed Operation of a Weekend Flea Market at Kai Tak Runway Tip (Paper No. TFKT/07/2018)

Briefing by the Energizing Kowloon East Office (EKEO)

4.1 **Mr Edwin WONG** from EKEO briefed Members on its initiative to invite proposals from non-profit making organizations (NPOs) for operating a weekend flea market on the Kai Tak Runway Tip.

Discussion

Site Location

4.2 **Mr CHAN Ka-kui** and **Mr LEUNG Kong-yui** both supported the idea but expressed the view that the proposed location was not ideal due to poor accessibility. **Mr Paul ZIMMERMAN** concurred, adding that the proposed location would only be suitable for organizing special and designated activities. He counter-proposed to locate the flea market along the Kwun Tong Promenade, where people could easily access by public transport.

4.3 **Mr Anthony CHEUNG** shared the concern about the flea market's ability to attract and retain visitors. Instead of designating the area closer to KTAC as a transport zone, he suggested that the area should be designated as a leisure and activity zone so that public could go closer to the waterfront area.

4.4 In response, **Ms Brenda AU** acknowledged the difficulty that the site location might present but looked forward to the vibrancy or patronage that the flea market, which would provide thematic events and activities, could bring about to the runway tip. As regards the site

arrangement,, she explained that the current location of the transport zone could allow easy access to and from Shing Fung Road. Locating the leisure and activity zone nearer to the Kai Tak Cruise Terminal (KTCT) could also allow the KTCT building to shield off some sunlight, which would give visitors in the said zone better comfort in summer.

Transportation

4.5 **Prof Wallace CHANG** suggested connecting the site and the Kwun Tong Promenade by water taxis and floating pontoons.

4.6 **Ir Raymond CHAN Kin-sek** noted that the proposed site was far away from public transport facilities and said that accessibility would be a key factor for the flea market to succeed.

4.7 **Mr Anthony CHEUNG** opined that the existing public transport service was insufficient to cater for the surge in visitors in future and advised the Government to introduce special transport arrangements. **Mr TAM Po-yiu** agreed, adding that the enhanced transport arrangement could also serve KTCT.

4.8 **Mr LEUNG Kong-yui** suggested providing more parking spaces in the market and making use of the existing ones in KTCT. **Ir Raymond CHAN Kin-sek** concurred and further suggested providing shuttle bus service between the market and the hinterland areas.

4.9 **Ms Brenda AU** responded that the operator would be required to submit traffic and transport plans to cope with the operation of the market, and EKEO was liaising with the Transport Department (TD) for increasing the frequency of public transport services. . She envisaged that the visitor flow of the flea market would not adversely

affect that of KTCT as the visitors to the market would be spread out. In response to Mr LEUNG's comments on the provision of parking spaces, she responded that apart from the 150 car parking and 10 coaching parking spaces, a bicycle parking area would also be provided at the site, and there were also parking facilities in KTCT.

Operator

4.10 **Mr CHAN Ka-kui, Mr Anthony CHEUNG and Mr LEUNG Kong-yui** doubted if NPOs, given the lack of resources and business experience, could operate the market successfully.

4.11 **Mr TAM Po-yiu** asked if EKEO would consult the Task Force and District Council when selecting the suitable NPO to operate the flea market.

4.12 **Ms Connie CHEUNG** enquired if there were any clauses in the tender document allowing the NPO to sublet the Food & Beverage (F&B) outlets to one single operator.

4.13 **Ms Brenda AU** responded that they had previously consulted a number of NPOs to tap their experiences in flea market operation and their comments had been taken into account when formulating the proposal. She further said that one level of subletting would be allowed under the terms of Invitation for Proposal.

Theme of Flea Market

4.14 To attract more visitors, **Mr LEUNG Kong-yui** suggested organising different themed activities from time to time. **Sr Raymond**

CHAN Yuk-ming concurred and suggested converting part of the market area to pet garden.

Other Comments

4.15 **Mrs Karen BARRETTO** asked for waste reduction plans and said that disposable items should not be used in the market.

4.16 **Mr TAM Po-yiu** enquired about the future development of the site located north of the flea market.

4.17 **Ms Connie CHEUNG** suggested selling traditional Hong Kong cuisine.

4.18 **Ms Brenda AU** took note of Members' suggestion on waste management and supplemented that there would be around 20 F&B stalls and several food truck pitches in the market. In response to Mr TAM's comments, she said that the area north of the market was reserved for a proposed temporary water sports centre and the development of Kai Tak Runway Park Phase II.

Way Forward

4.19 **The Chair** concluded that any proposals that could bring about more vibrancy to the harbourfront, including the subject proposal of EKEO, would be worth supporting and experimenting. He hoped that EKEO would sail through, but not be bounded by the constraints. EKEO was advised to take Members' views into consideration with a view to inviting proposals later this year.

Item 5 Revitalisation of Tsui Ping River (Paper No. TFKT/08/2018)

5.1 **Ms Connie CHEUNG** declared that her company was involved in the project and the Chair decided that she could remain in the meeting but refrain from making comments.

Briefing by the Drainage Services Department (DSD)

5.2 **Mr CHAN Hak-keung** and **Mr Thomas WONG** from DSD updated Members on the project with the aid of PowerPoint.

Facilities along the Tsui Ping River

5.3 **Mr Anthony CHEUNG** supported the project and asked if there would be any water-friendly or educational facilities provided along the river. Furthermore, he suggested adding visual landmarks such as signboards so that the pedestrians and drivers could gain better sight of the revitalized river from the roadside.

5.4 **Mr TAM Po-yiu** enquired about the design of the modification works for the existing footbridge across Lei Yue Mun Road.

5.5 **Mr Andy LEWIS** appreciated the project and commented that balance should be struck between flood risk prevention and the provision of amenity spaces.

5.6 **Mr Paul ZIMMERMAN** asked if eating and drinking would be allowed along the river side and further suggested providing some water refill points.

5.7 With the provision of new lift, **Prof Wallace CHANG** asked if

it was still necessary to re-provide the footbridge ramp at Zone A. Noting that the proposed footpath adjacent to the Kwun Tong Preliminary Treatment Works (KTPTW) was rather narrow, he asked if DSD had any plans to widen the footpath.

5.8 **Mr Ken SO** advised the project team to provide vertical greening on the external wall of KTPTW.

5.9 **Mr CHAN Hak-keung** thanked Members for their invaluable views and responded to Members' comments as follows:

- (a) he said that the Tsui Ping River was the major drainage channel for Tsui Ping catchment in Kwun Tong. It was not recommended for the public to get into the river for the sake of safety;
- (b) he supplemented that a pavilion had been proposed as educational facility and that information panels would be displayed;
- (c) for the visual landmarks, DSD would consider appropriate streetscape enhancement works along the Tsui Ping River;
- (d) for the footbridge across the Lei Yue Mun Road, he explained that local residents had expressed request for the re-provision of footbridge ramp ;
- (e) DSD would also consider Members' suggestions on greening and amenity facilities;
- (f) for the footpath adjacent to KTPTW, he explained that the width of the proposed footpath would be limited by the facilities and access of KTPTW. Nonetheless, the project team would further explore the feasibility of widening the footpath; and

- (g) it would be however difficult to allow the public entering the KTPTW due to safety and operation concerns.

Interfacing with Adjoining Areas

5.10 **Mr Anthony CHEUNG** hoped that there would be seamless connection between the river and adjoining recreational facilities, such as Kwun Tong Swimming Pool and the Tsui Ping River Garden.

5.11 **Mr PAUL ZIMMERMAN** suggested reducing the use of fences and railings so as to provide seamless connection of POS. **Prof Wallace CHANG** concurred, saying that this could be done by means of knitting the water and open space together.

5.12 **Mr CHAN Hak-keung** responded that DSD had been liaising with relevant departments of adjacent projects to better coordinate the design and interfacing issues.

Biological and Ecological Concerns

5.13 **Ir Raymond CHAN Kin-sek** noticed that the salinity of the river flow would vary during different periods of time and enquired how this would impact in-stream plantation. .

5.14 **Mrs Karen BARRETTO** opined that the proposed facilities were human-centered and was concerned about the loss of ecological function after the completion of project.

5.15 **Mr Andy LEWIS** asked if the size of the proposed engineered wetland would be large enough to function.

5.16 **Mr Paul ZIMMERMAN** asked if access facilities would be provided so that trespassed animals could leave the river area.

5.17 **Mr CHAN Hak-keung** responded that the existing King Yip Street Nullah was a conventional concrete channel with low ecological value. The project would introduce ecological enhancement works along the river, DSD was conducting a small-scale planting trial in the existing King Yip Street Nullah for selection of suitable aquatic plants.

Water Quality

5.18 In response to **Mr TAM Po-yiu's** enquiry on water quality, **Mr CHAN Hak-keung** responded that while the Tsui Ping River was a drainage channel which collected stormwater from the upstream catchment, expedient connections at upstream may affect the water quality of Tsui Ping River and DSD had been collaborating continuously with the Environmental Protection Department (EPD) to identify expedient connections at the upstream with a view to improving the water quality of the revitalized river.

Other Comments

5.19 In response to **Prof Wallace CHANG's** query on the expected completion date, **Mr CHAN Hak-keung** responded that the project was currently under the detailed design stage and the Stage 2 Public Engagement (PE) Exercise would last until mid-July 2018. After the PE Exercise, the project team would refine its design and prepare for statutory gazettal.

Way Forward

5.20 **The Chair** concluded that the project was in line with the Harbour Planning Principles & Guidelines (HPP&Gs). Members congratulated DSD for putting forward a good initiative that could reduce flood risk and at the same time, enhance walkability and connectivity to provide an enjoyable riverside environment to the public. The Task Force also regarded the project as an exemplar for other departments to follow.

Item 6 Any Other Business

Updates on Kai Tak Sports Park (KTSP)

6.1 Noting that one of the prequalified tenderers dropped out from the tender exercise, **Mr Andy LEWIS** asked if the Secretariat could provide any updates on the KTSP development.

6.2 **Miss Rosalind CHEUNG** responded that the two-stage tender exercise had been launched for the KTSP project and three prequalified tenderers were shortlisted after Stage 1 Exercise. The Stage 2 exercise would end in August 2018 and she said that Members would be suitably updated in due course.

Date of next meeting

6.3 The Chair informed Members that the next meeting was tentatively scheduled for September 2018. The Secretariat would inform Members of the meeting date in due course.

6.4 There being no other business, the meeting was adjourned at 6:05pm.

Secretariat

Task Force on Kai Tak Harbourfront Development

September 2018

Appendix N
Presentation Materials for Community
Workshops on 16 June 2018 and 7 July 2018

Revitalisation of Tsui Ping River Stage 2 Public Engagement

Community Workshop

1

Rundown of the Workshop

Time	Programme
3:00 pm	The workshop begins
3:05 pm	Welcome speech
3:10 – 3:30 pm	Introduction to “Revitalisation of Tsui Ping River”
3:30 – 4:30 pm	Group discussion
4:30 – 4:50 pm	Group reporting
4:50 – 5:00 pm	Concluding remarks
5:00 pm	End

2

Revitalisation of Tsui Ping River

Project Background

- To revitalise the existing nullah into a unique river with environmental, ecological and landscaping upgrading
- To enhance walkability and connectivity with the neighbourhood, so as to create synergy and enable the public to enjoy an accessible and green community



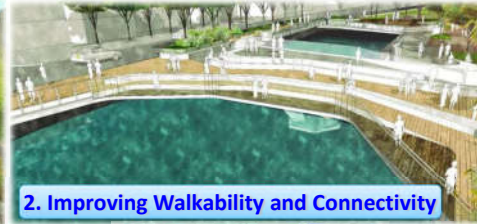
4

Project Objectives

1. Revitalising the River



2. Improving Walkability and Connectivity



4. Reducing Flood Risk



3. Fostering a Vibrant Riverine Public Space



Project Progress & Public Engagement

Project Progress

- Stage 1 Public Engagement – Jan to Mar 2017
- Detailed Design Stage – commenced in Dec 2017
- Stage 2 Public Engagement – May to Jul 2018

Major Views in Stage 1 PE



Revitalising the River



Walkability and Connectivity



Fostering Public Space

Activities of Stage 2 PE

Stage 2 PE Period (17 May to 16 Jul)

Consultation with Kwun Tong District Council (17 May)

Consultation with Task Force on Kai Tak Harbourfront
Development under Harbourfront Commission (23 May)

Roving Exhibitions (17 May to 6 Jul)

Community Workshops

- Sai Cho Wan Neighbourhood Community Centre (16 Jun)
- Kwun Tong Community Centre (7 Jul)

Project Website: www.tsuipingriver.hk

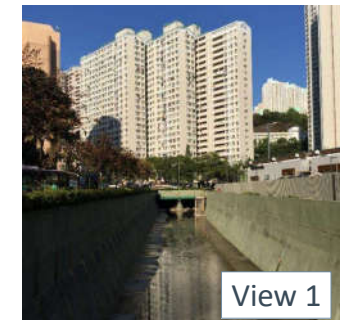
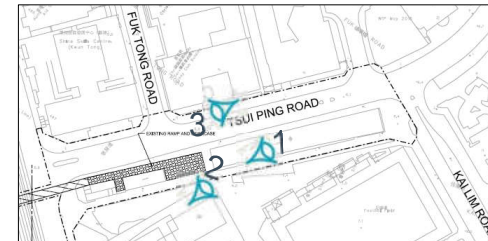
9



Overall Layout

Zone A

(Between Kai Lim Road to Kwun Tong Road)

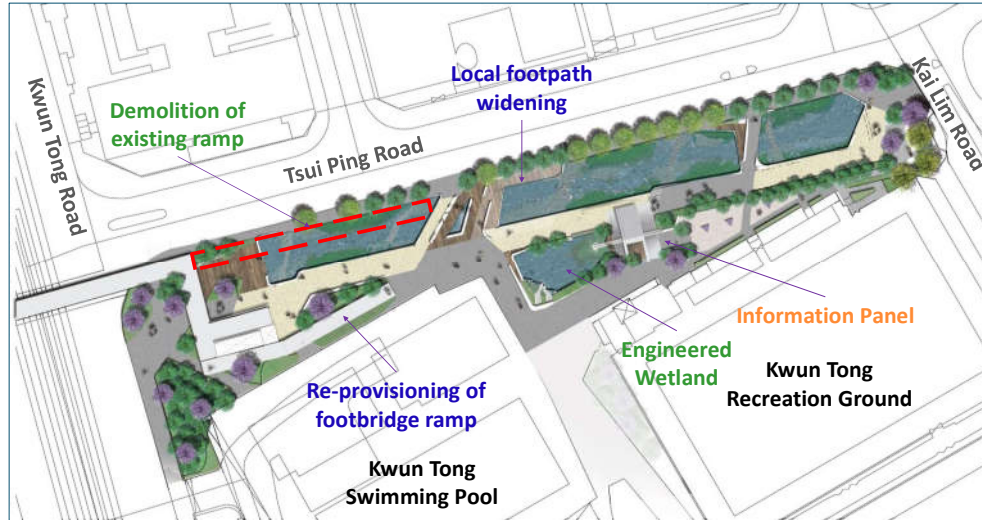


11

12

Zone A

(Between Kai Lim Road to Kwun Tong Road)



13

Zone A

(Between Kai Lim Road to Kwun Tong Road)



14

Zone A

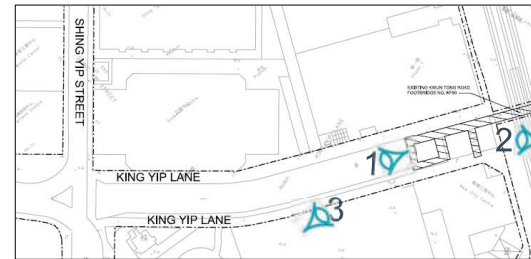
(Between Kai Lim Road to Kwun Tong Road)



15

Zone B

(Between Kwun Tong Road to Shing Yip Street)



16

Zone B

(Between Kwun Tong Road to Shing Yip Street)



17

Zone B

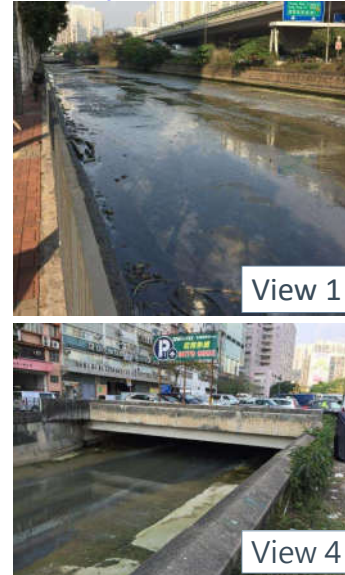
(Between Kwun Tong Road to Shing Yip Street)



18

Zone C

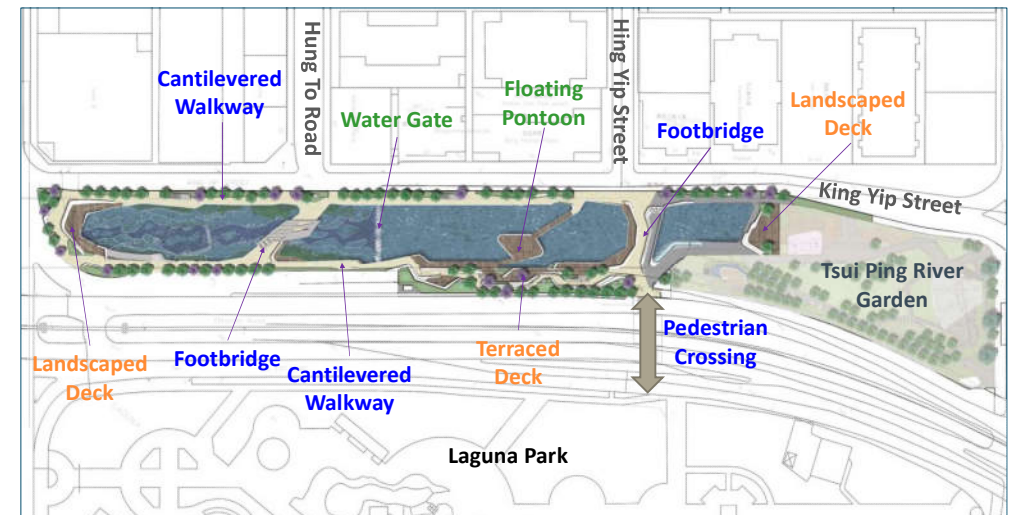
(Between Shing Yip Street and Wai Yip Street)



19

Zone C

(Between Shing Yip Street and Wai Yip Street)



20

Zone C

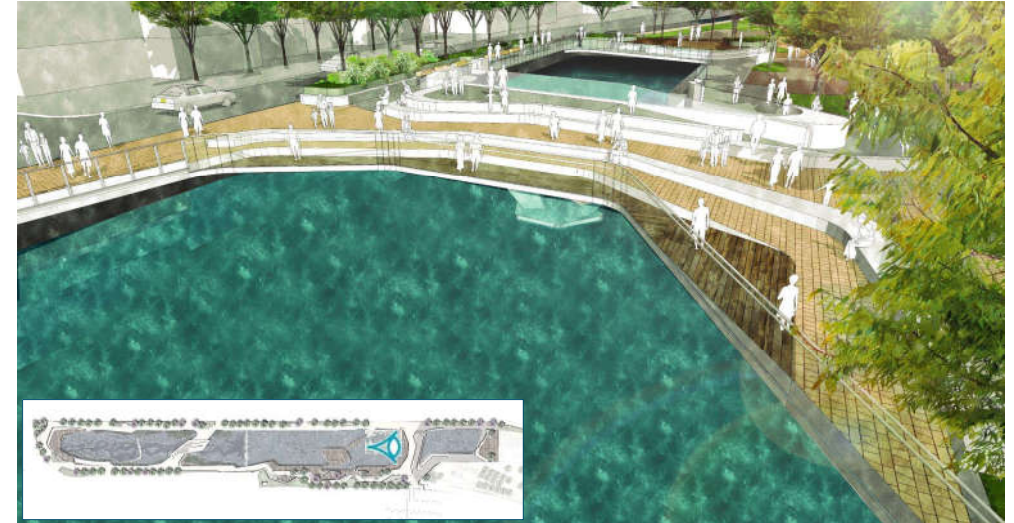
(Between Shing Yip Street and Wai Yip Street)



21

Zone C

(Between Shing Yip Street and Wai Yip Street)



22

Zone C

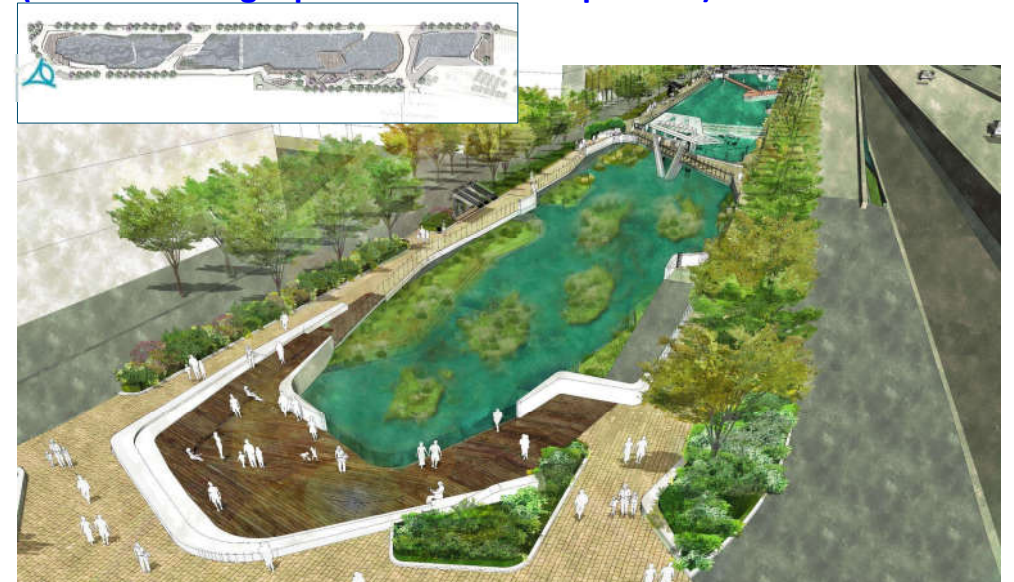
(Between Shing Yip Street and Wai Yip Street)



23

Zone C

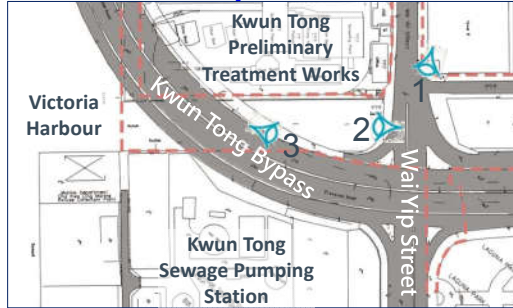
(Between Shing Yip Street and Wai Yip Street)



24

Zone D

(Between Wai Yip Street and Victoria Harbour)



25

Zone D

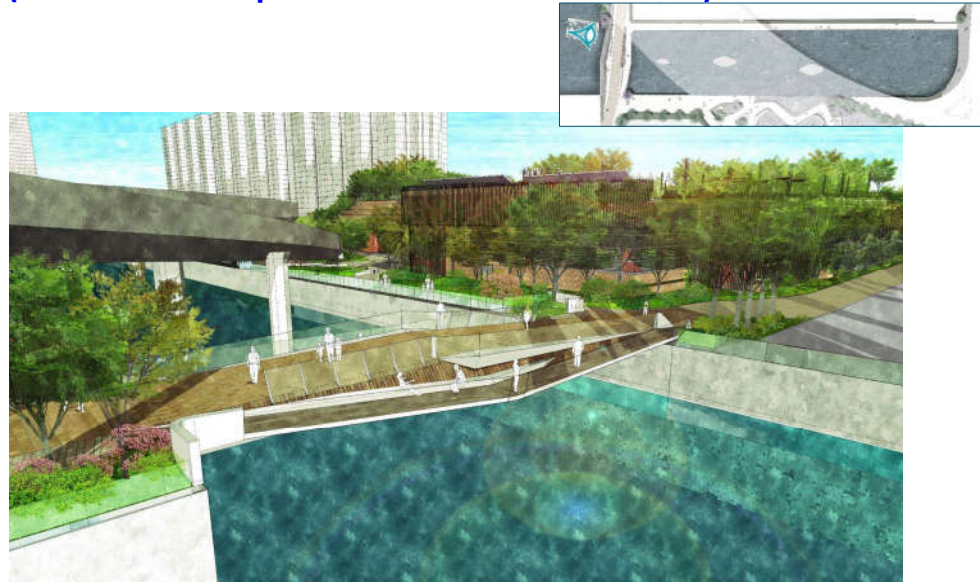
(Between Wai Yip Street and Victoria Harbour)



26

Zone D

(Between Wai Yip Street and Victoria Harbour)



27

Green River Corridor



28

Thank you



Appendix O
Photos of Community Workshops on
16 June 2018 and 7 July 2018

Community Workshops on 16 June 2018



Community Workshops on 7 July 2018



Appendix P
Presentation Materials for Focus Group Meeting
on 22 June 2018

Focus Group Meeting

Revitalisation of Tsui Ping River Stage 2 Public Engagement

22 June 2018

1

Agenda

Time	Task
4:30 pm – 5:00 pm	Registration
5:00 pm	Introduction
5:05 – 5:25 pm	Introduction of “Revitalisation of Tsui Ping River”
5:25 – 6:25 pm	Discussion Session
6:30 pm	Concluding Remarks

2

Content

- ▶ Project Background
- ▶ Project Progress & Public Engagement
- ▶ Updated Design Scheme

3



Project Background

Project Background

Revitalise • Connect • Share



- ▶ To revitalise the existing nullah into a unique river with environmental, ecological and landscaping upgrading
- ▶ To enhance walkability and connectivity with the neighbourhood, so as to create synergy and enable the public to enjoy an accessible and green community



▶ 5

Project Objectives

Revitalise • Connect • Share



▶ 6

Project Progress & Public Engagement

Project Progress

Revitalise • Connect • Share



- ▶ Stage 1 Public Engagement – Jan to Mar 2017
- ▶ Detailed Design Stage – commenced in Dec 2017
- ▶ Stage 2 Public Engagement – May to Jul 2018

▶ 8

Major Views in Stage 1 PE



Revitalising the River



Walkability and Connectivity



Fostering Public Space

▶ 9

Activities of Stage 2 PE

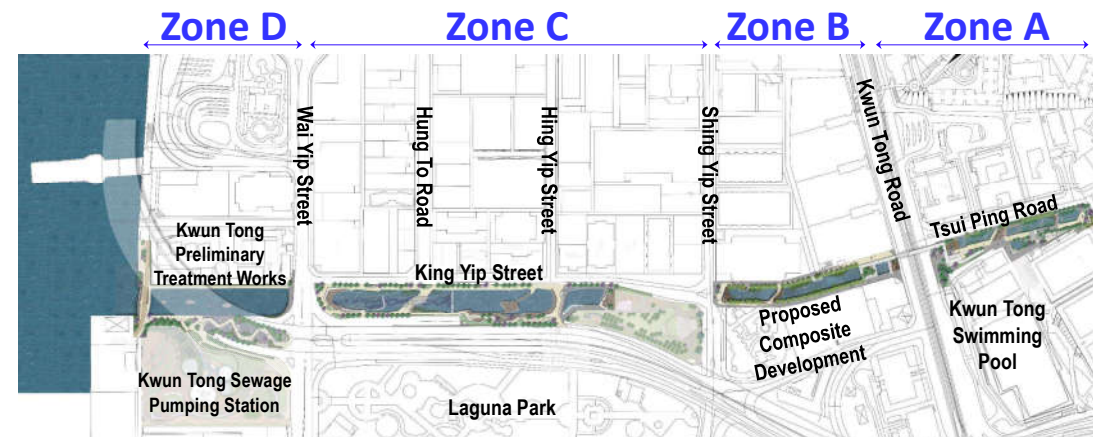
- ▶ Stage 2 PE Period (17 May to 16 Jul)
- ▶ Consultation with Kwun Tong District Council (17 May)
- ▶ Consultation with Task Force on Kai Tak Harbourfront Development under Harbourfront Commission (23 May)
- ▶ Roving Exhibitions (17 May to 6 Jul)
- ▶ Community Workshops
 - Sai Cho Wan Neighbourhood Community Centre (16 Jun)
 - Kwun Tong Community Centre (7 Jul)
- ▶ Project Website: www.tsuipingriver.hk

▶ 10



Updated Design Scheme

Overall Layout

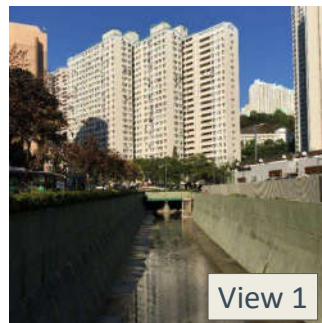
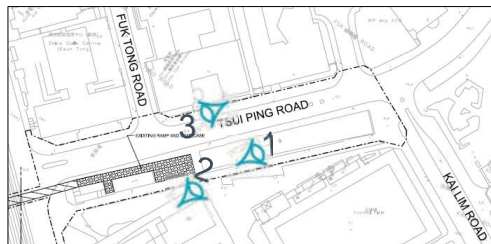


▶ 12

Zone A

(Between Kai Lim Road to Kwun Tong Road)

Revitalise • Connect • Share



View 1



View 2



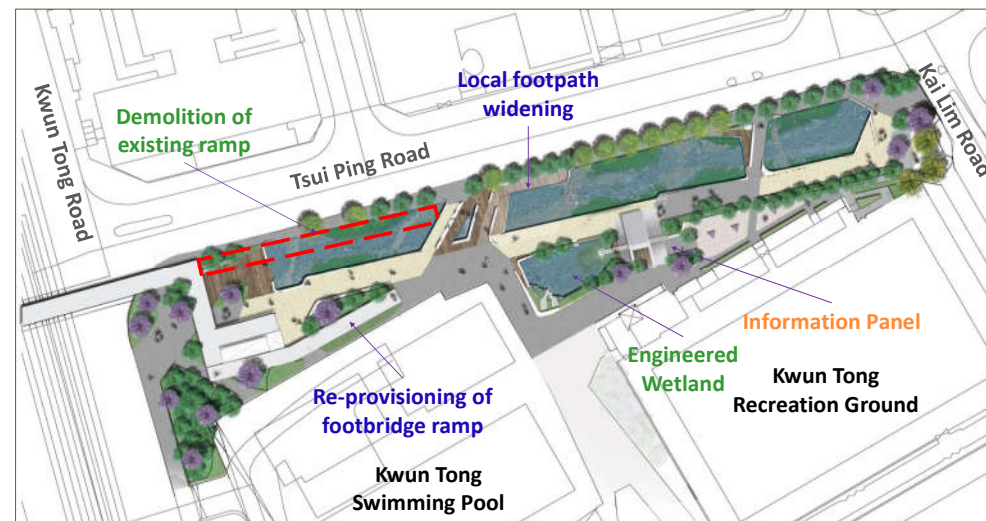
View 3

▶ 13

Zone A

(Between Kai Lim Road to Kwun Tong Road)

Revitalise • Connect • Share



▶ 14

Zone A

(Between Kai Lim Road to Kwun Tong Road)

Revitalise • Connect • Share



▶ 15

Zone A

(Between Kai Lim Road to Kwun Tong Road)

Revitalise • Connect • Share

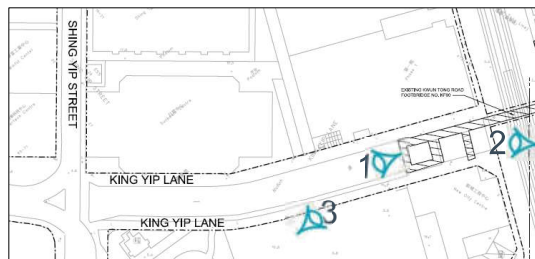


▶ 16

Zone B

(Between Kwun Tong Road to Shing Yip Street)

Revitalise • Connect • Share



View 1



View 2

View 3

▶ 17

Zone B

(Between Kwun Tong Road to Shing Yip Street)

Revitalise • Connect • Share



▶ 18

Zone B

(Between Kwun Tong Road to Shing Yip Street)

Revitalise • Connect • Share

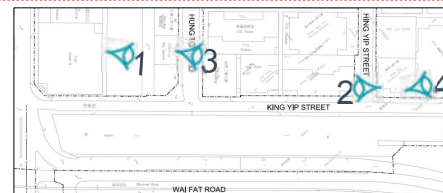


▶ 19

Zone C

(Between Shing Yip Street and Wai Yip Street)

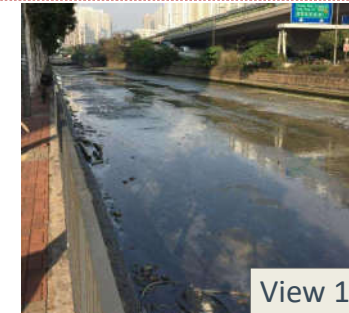
Revitalise • Connect • Share



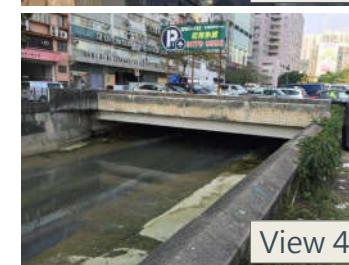
View 2



View 3



View 1



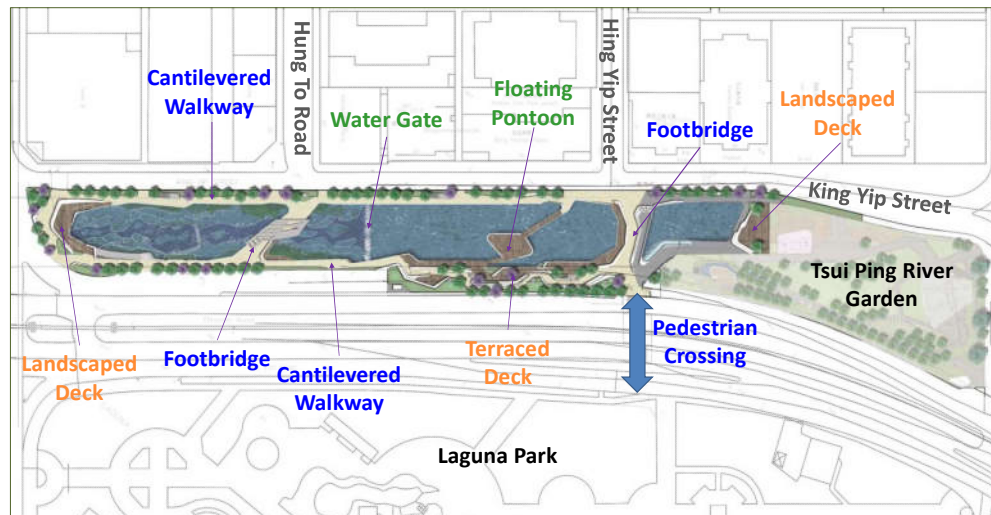
View 4

▶ 20

Zone C

(Between Shing Yip Street and Wai Yip Street)

Revitalise • Connect • Share



▶ 21

Zone C

(Between Shing Yip Street and Wai Yip Street)

Revitalise • Connect • Share

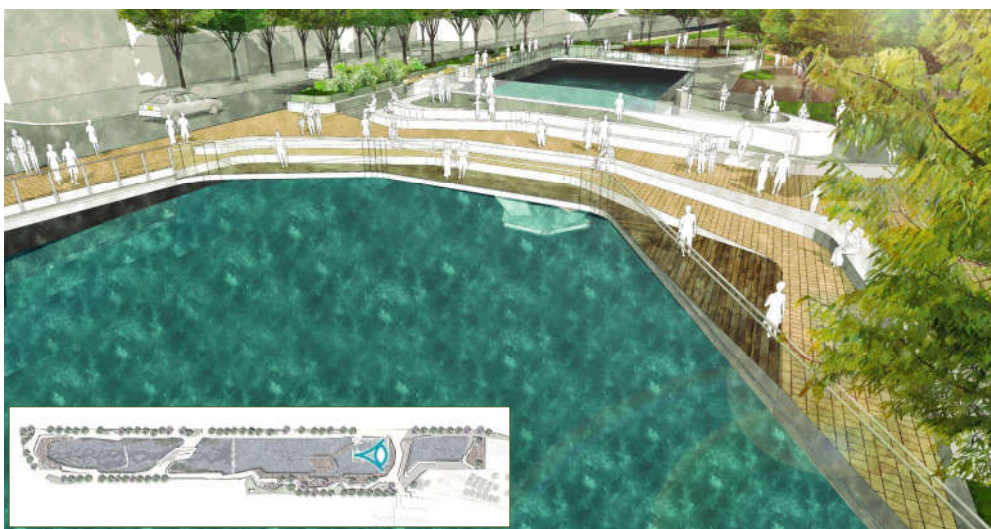


▶ 22

Zone C

(Between Shing Yip Street and Wai Yip Street)

Revitalise • Connect • Share

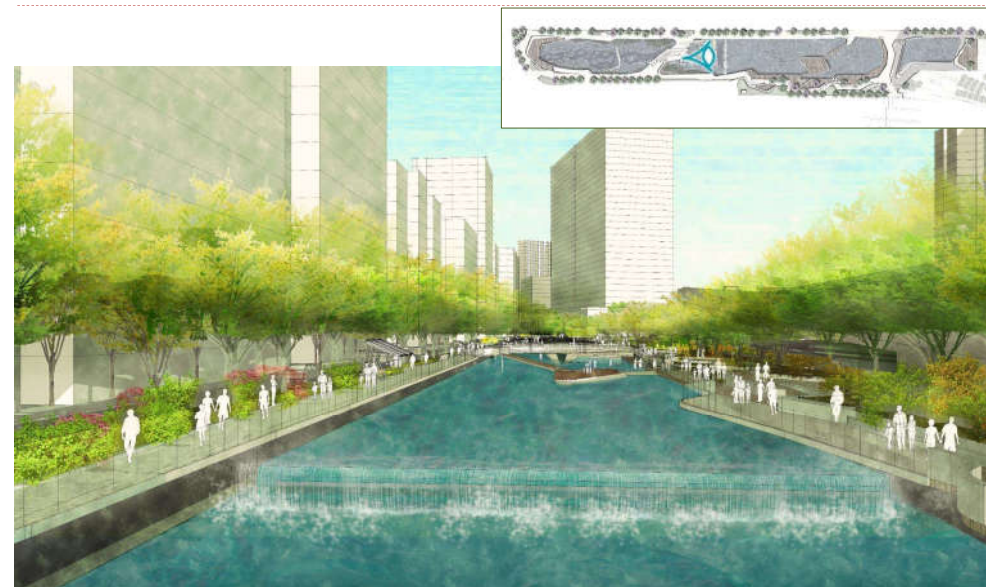


▶ 23

Zone C

(Between Shing Yip Street and Wai Yip Street)

Revitalise • Connect • Share



▶ 24

Zone C

(Between Shing Yip Street and Wai Yip Street)

Revitalise • Connect • Share

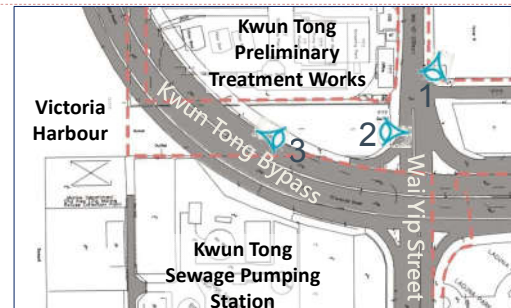


▶ 25

Zone D

(Between Wai Yip Street and Victoria Harbour)

Revitalise • Connect • Share



▶ 26



Zone D

(Between Wai Yip Street and Victoria Harbour)

Revitalise • Connect • Share

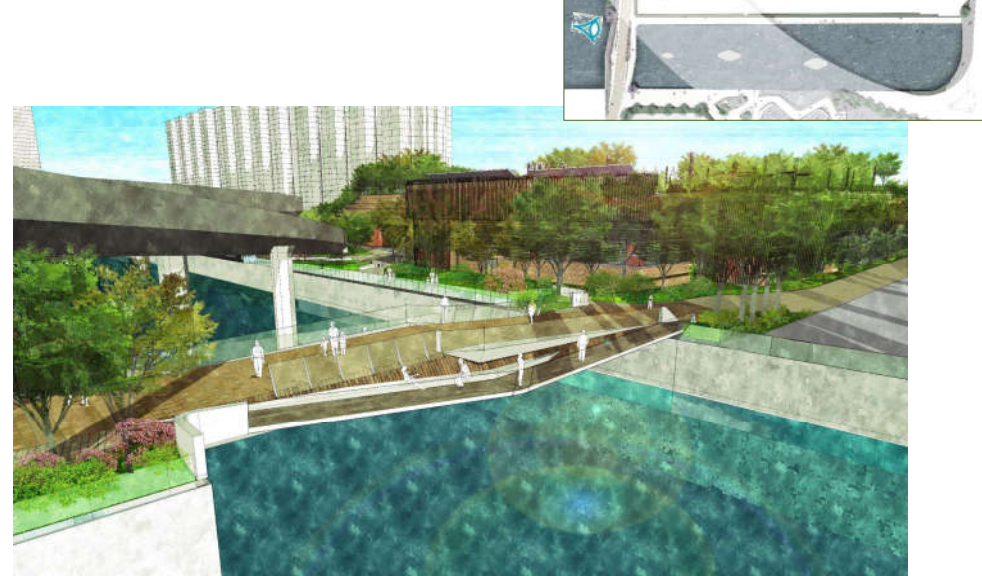


▶ 27

Zone D

(Between Wai Yip Street and Victoria Harbour)

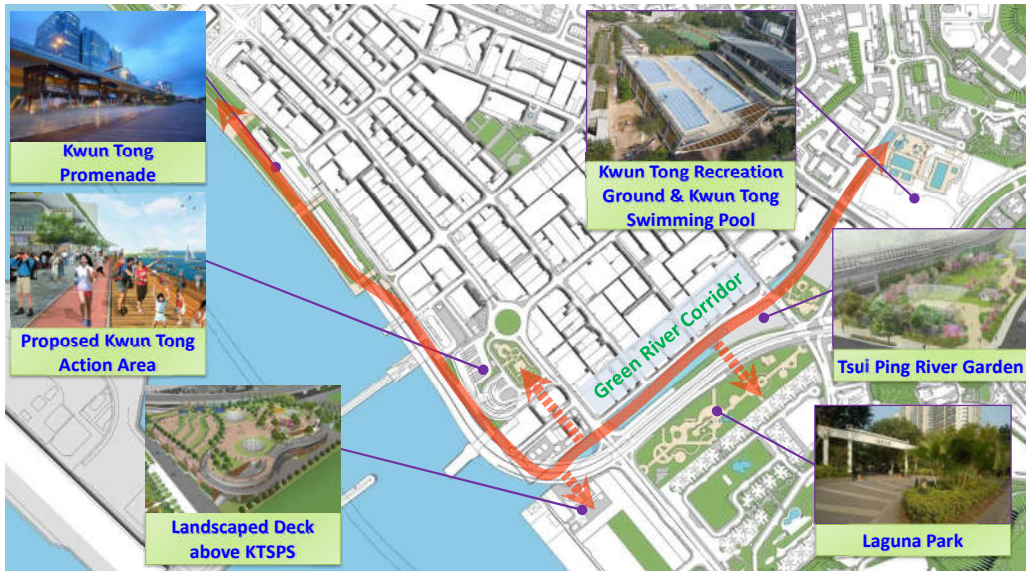
Revitalise • Connect • Share



▶ 28

Green River Corridor

Revitalise • Connect • Share



▶ 29

Discussion Session

Revitalise • Connect • Share



1. Revitalising the River
2. Walkability and Connectivity
3. Fostering Public Space

▶ 31



Discussion Session

Discussion Session

Revitalise • Connect • Share



1. Revitalising the River
2. Walkability and Connectivity
3. Fostering Public Space

▶ 32

Discussion Session

1. Revitalising the River
2. Walkability and Connectivity
3. Fostering Public Space



Appendix Q
Photos of Focus Group Meeting on 22 June 2018

Focus Group Meeting on 16 June 2018





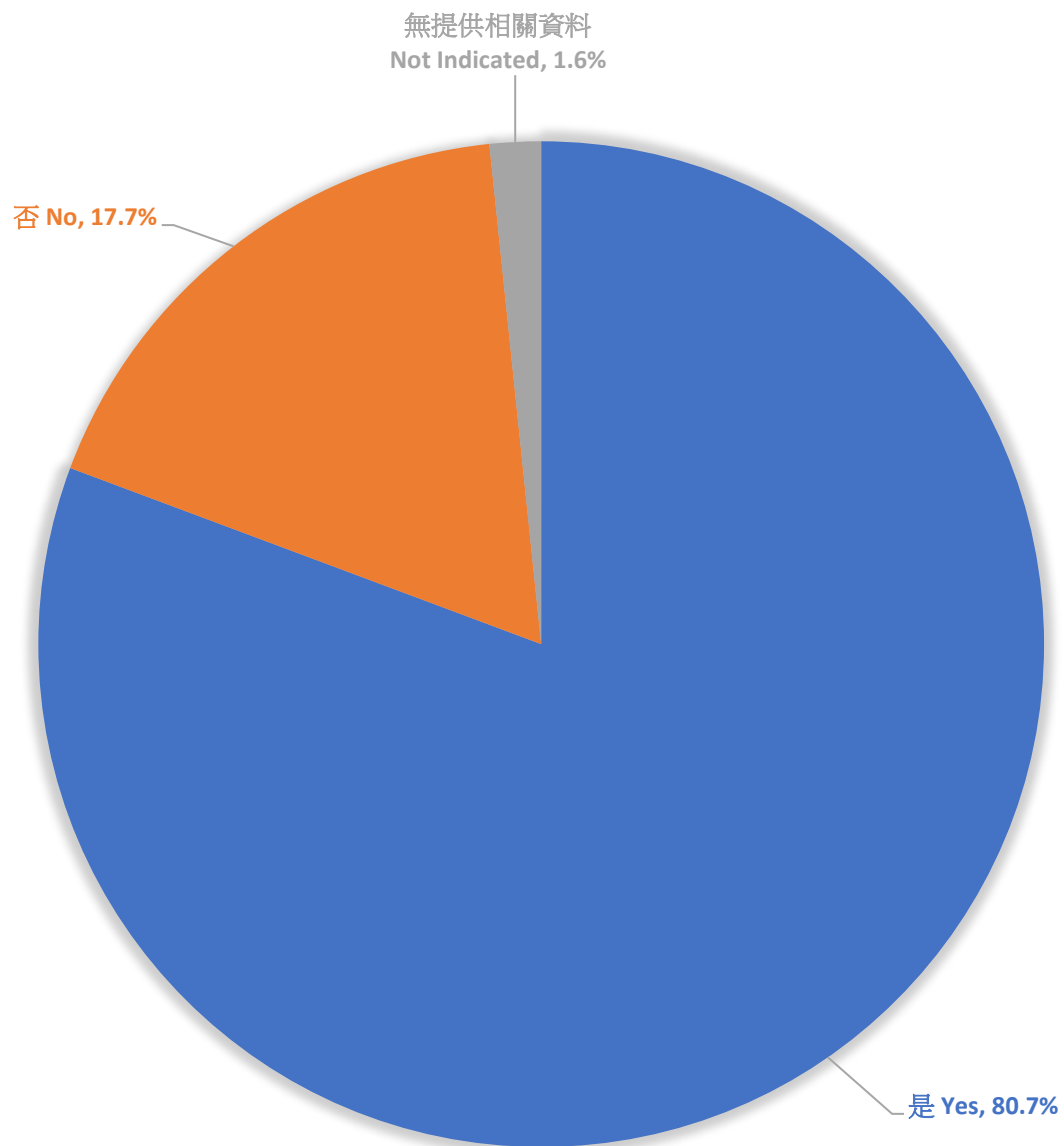
Appendix R

Summary of Questionnaire Survey

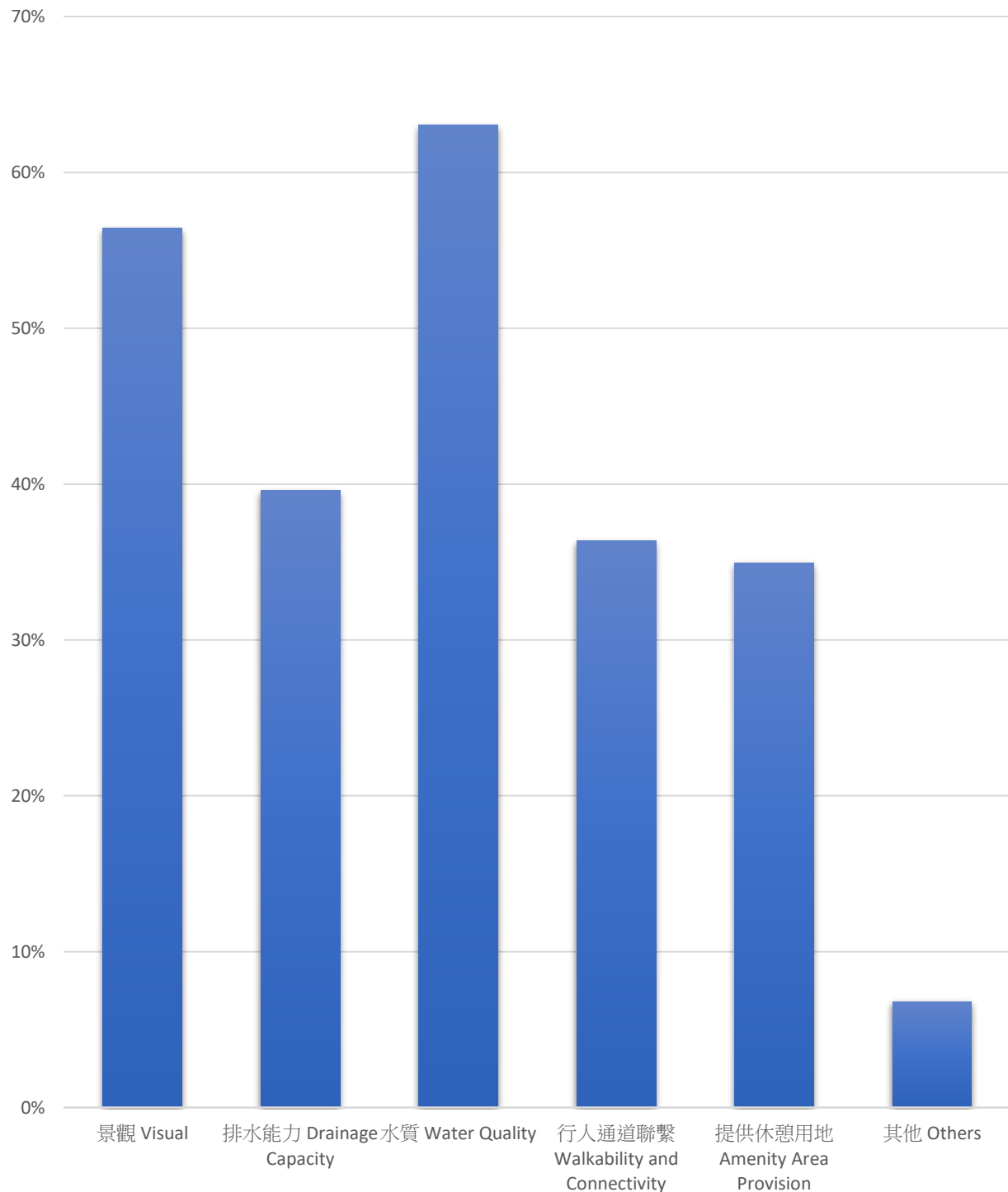
第一部分：意見

Part 1: Opinion

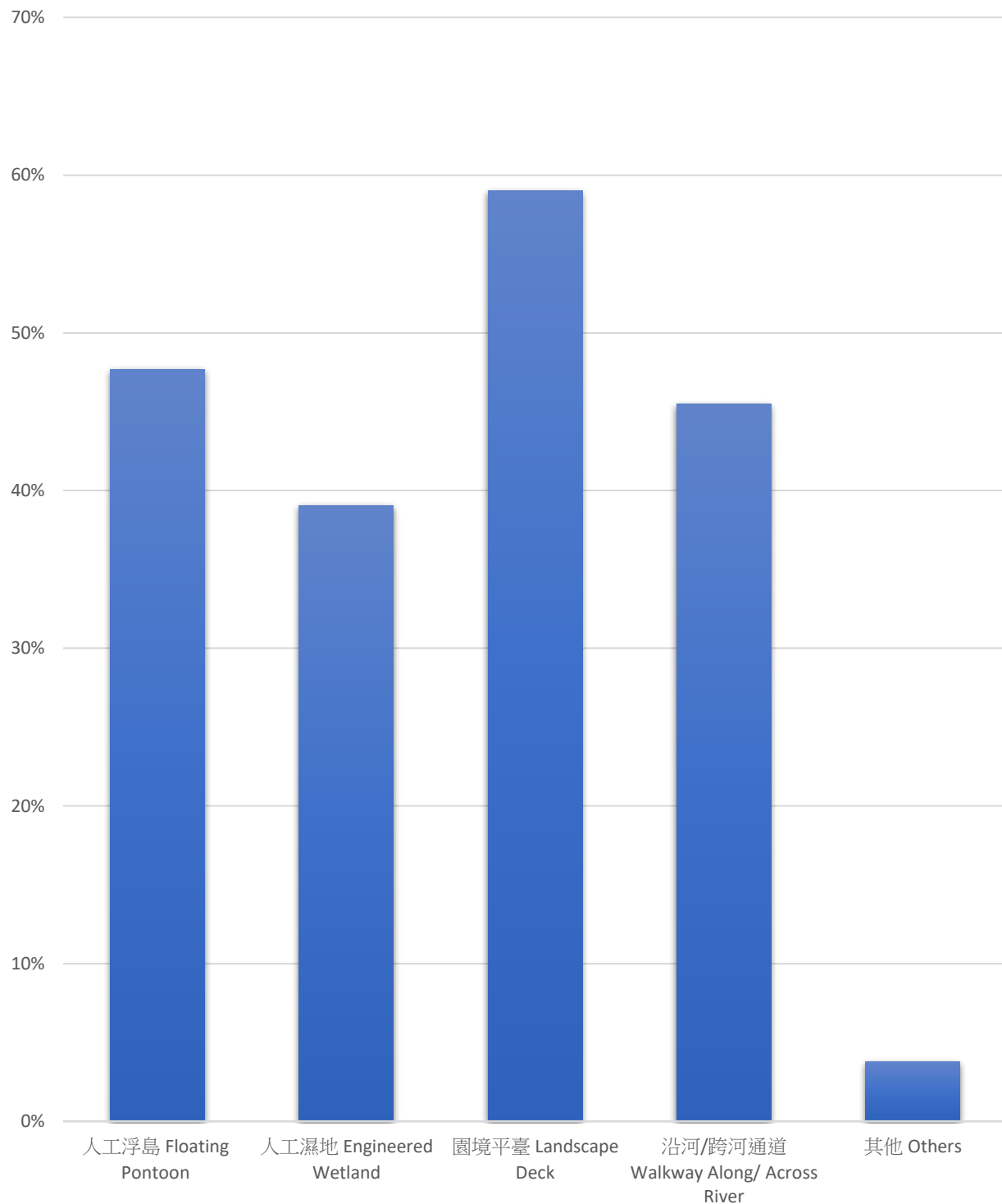
受訪人士是觀塘區居民或者在觀塘區工作/上學
THE INTERVIEWEES ARE LIVING IN KWUN TONG OR
WORKING / GOING TO SCHOOL IN KWUN TONG



受訪人士對於現有敬業街明渠的關注點 The
interviewees' concern(s) with regards to the existing
King Yip Street Nullah

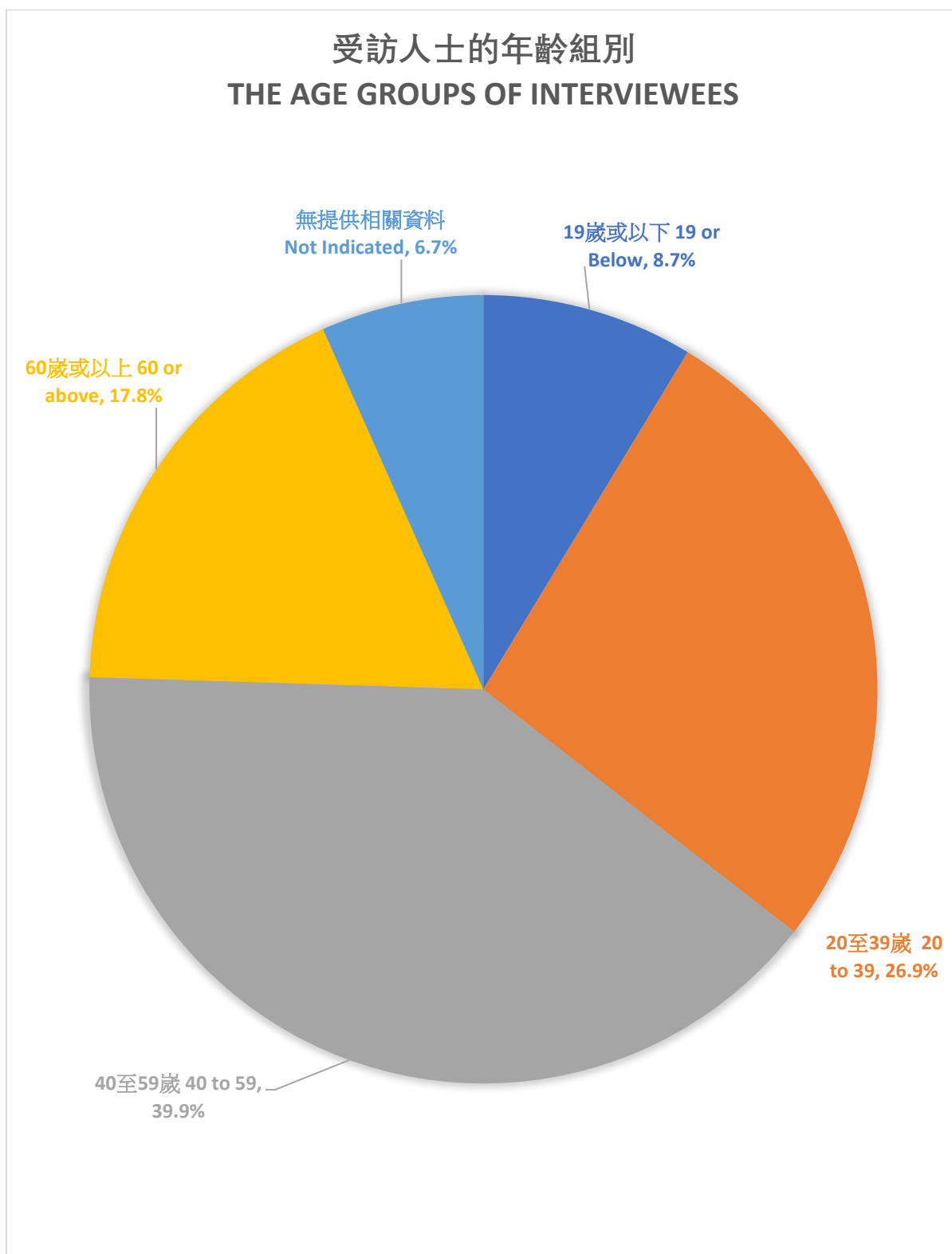


受訪人士有興趣使用的未來「翠屏河」的設施
The facilities of “Tsui Ping River” the interviewees
would like yo use



第二部分：個人資料

Part 2: Personal Particulars



Asia Pacific Presence

Hong Kong

13th Floor Wharf T&T Centre
Harbour City
Tsim Sha Tsui, Kowloon
Hong Kong
Tel: (852) 2972 1000
Fax: (852) 2890 6343
General E-mail: info.hk@atkinsglobal.com

Beijing

10/F, Tower A, Gemdale Plaza
No. 91 Jianguo Road, Chaoyang District
Beijing 100022
China
Tel: (86) 10 5965 1000
Fax: (86) 10 5965 1001
General E-mail: info.cn@atkinsglobal.com

Shanghai

Unit 2204-2210, Ciro's Plaza
No. 388 West Nanjing Road
Shanghai 200003
China
Tel: (86) 21 6080 2100
Fax: (86) 21 6080 2101
General E-mail: info.cn@atkinsglobal.com

Shenzhen

Unit 01-02 & 11-16, 35/F Shun Hing Square
Jie Fang Road, Luo Hu District
Shenzhen 518008
China
Tel: (86) 755 3332 0668
Fax: (86) 755 3332 0669
General E-mail: info.cn@atkinsglobal.com

Chengdu

Unit 05, 28/F, T2, Raffles Square
No. 3, Section 4, South Renmin Road
Wuhou District
Chengdu 610041
China
Tel: (86) 28 8620 2130
Fax: (86) 28 8620 2132
General E-mail: info.awc@atkinsglobal.com

Singapore

8 Cross Street
#24-01, PWC Building
Singapore 048424
Tel: (65) 6227 6433
Fax: (65) 6227 9344
General E-mail: info.sg@atkinsglobal.com

www.atkinsglobal.com

Sydney

Level 12, Suite 12.02
50 Berry Street
North Sydney
NSW 2060
Australia
Tel: (61) 2 8002 0300
Fax: (61) 2 8920 8322
General E-mail: info.au@atkinsglobal.com

Perth

Level 13, AMP Building
140 St. Georges Terrace
Perth
WA 6000
Australia
Tel: (61) 8 9322 8080
Fax: (61) 8 9322 8070
General E-mail: info.perth@atkinsglobal.com

Ho Chi Minh City

Unit 1316, 13/F, Kumho Asiana Plaza
39 Le Duan Street
District 1, Ho Chi Minh City
Vietnam
Tel: (848) 6288 8700
DDI: (848) 6288 8972
Fax: (848) 6288 8701
General E-mail: info.vn@atkinsglobal.com

Kuala Lumpur

Suite 8.01, Level 8, Menara Binjai
No 2 Jalan Binjai, 50450 Kuala Lumpur
Malaysia
Tel: (603) 2386 7858
Fax: (603) 2386 7711
General E-mail: info.my@atkinsglobal.com

Bangalore

10th Floor, Safina Towers
3 Ali Asker Road
Bangalore, Karnataka - 560052
India
Tel: (91) 80 4019 9199
Fax: (91) 80 4147 5822
General E-mail: india.office@atkinsglobal.com

Delhi

19 Floor - Tower C, DLF Cyber Greens
DLF Cyber City, DLF Phase - III
Gurgaon, Haryana - 122 002
India
Tel: (91) 124 384 7199
Fax: (91) 124 401 4550
General E-mail: india.office@atkinsglobal.com

ATKINS

Member of the SNC-Lavalin Group